

Shelby County Sheriff's Office

March 2012 Jail Report Card



Jail Population Report

March-12

Jail Population Stats	This Month to Last Month				Same Month Last Year			Year to Date (Last Year/This Year)			
	Mar-12	Feb-12	(+/-)	% Chng	Mar-11	(+/-)	% Chng	2012	2011	(+/-)	% Chng
Average Daily Population ¹	2445	2475	-30	-1%	2555	-110	-4%	2526	2540	-14	-1%
Male	2206	2236	-30	-1%	2325	-119	-5%	2286	2315	-29	-1%
Female	239	239	0	0%	230	9	4%	239	225	15	7%
201 Poplar	2176	2209	-33	-1%	2298	-122	-5%	2258	2288	-30	-1%
Jail East	269	266	3	1%	257	12	5%	268	252	16	6%
Total Bookings (No Quick Books)	5092	4533	559	12%	5472	-380	-7%	14508	14061	447	3%
201 Poplar	3941	3556	385	11%	4261	-320	-8%	11340	11048	292	3%
Jail East	1151	977	174	18%	1211	-60	-5%	3168	3013	155	5%
No Prior Incarcerations ²	684	572	112	20%	785	-101	-13%	1901	1877	24	1%
Recidivist Inmates ²	4408	3961	447	11%	4687	-279	-6%	12607	12184	423	3%
Quick Bookings	665	636	29	5%	765	-100	-13%	1896	2027	-131	-6%
Total Number Released (No Quick Releases)	5056	4787	269	6%	5360	-304	-6%	14657	13867	790	6%
201 Poplar	3902	3792	110	3%	4188	-286	-7%	11502	10926	576	5%
Jail East	1154	995	159	16%	1172	-18	-2%	3155	2941	214	7%
Average Length of Stay	13.3	13.9	-0.6	-5%	12.8	0.5	4%	14.1	14.5	-0.4	-3%
Male (days)	15.5	16.0	-0.5	-3%	15.0	0.5	3%	16.3	16.8	-0.5	-3%
Female (days)	5.6	6.2	-0.6	-10%	5.0	0.6	12%	6.0	5.7	0.3	5%
Released Inmates - Over 72 Hours in Jail	31%	36%	-5%	-14%	32%	-1%	-3%	35%	34%	1%	2%
Males	34%	39%	-5%	-13%	35%	-1%	-3%	38%	37%	1%	2%
Females	20%	25%	-5%	-20%	21%	-1%	-5%	23%	23%	0%	1%
Released Inmates - Length of Stay (Over 72 Hours)	48	54	-6	-11%	53	-5	-9%	54	54	0	-1%
Males	52	57	-5	-9%	57	-5	-9%	58	58	0	0%
Females	26	36	-10	-28%	32	-6	-19%	30	31	-1	-3%
201 - Avg. Booking Process Time	4.63	5.15	-0.52	-10%	6.38	-1.75	-27%	4.9	5.4	-0.5	-9%
JE - Avg. Booking Process Time	2.92	2.86	0.06	2%	2.54	0.38	15%	2.8	2.1	0.7	32%
Misdemeanor Citations Issued	4003	3782	221	6%	4121	-118	-3%	11093	10477	616	6%
Legal Status	2425	2447	-22	-1%	2482	-57	-2%	7513	7512	1	0%
Pre-trial	2141	2154	-13	-1%	2220	-79	-4%	6605	6720	-115	-2%
Sentenced	144	146	-2	-1%	116	28	24%	463	379	84	22%
Hold	140	147	-7	-5%	146	-6	-4%	445	413	32	8%
Juvenile Bookings	25	12	13	108%	19	6	32%	56	46	10	22%
Male	24	12	12	100%	18	6	33%	55	44	11	25%
Female	1	0	1	0%	1	0	0%	1	2	-1	-50%
Avg. No Prior Incarcerations ³	337	353	-16	-5%	353	-16	-5%	364	363	1	0%
Avg. Recidivist Inmates ³	2130	2132	-2	0%	2172	-42	-2%	2189	2181	9	0%
1 to 2 Prior Incarcerations	412	391	21	5%	424	-12	-3%	413	445	-32	-7%
3rd Prior Incarceration	141	137	4	3%	169	-28	-17%	141	158	-17	-11%
4 to 5 Prior Incarcerations	265	253	12	5%	286	-21	-7%	263	285	-22	-8%
6 or More Prior Incarcerations	1312	1351	-39	-3%	1293	19	1%	1372	1292	80	6%

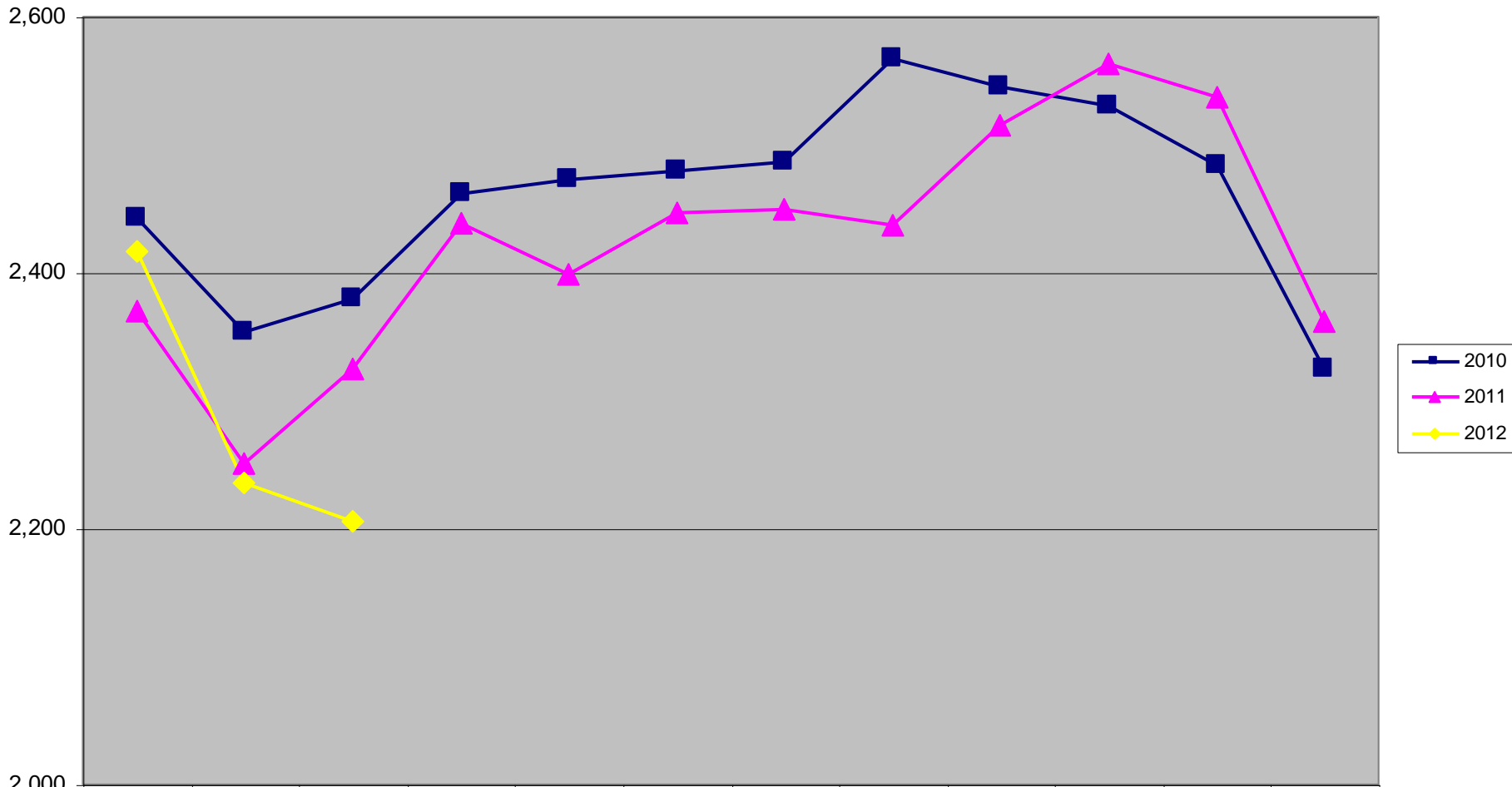
Green: decrease Red: increase

1 Average Daily Population does not include inmates in PW/ER/MMHI.

2 Numbers are based on Total Bookings.

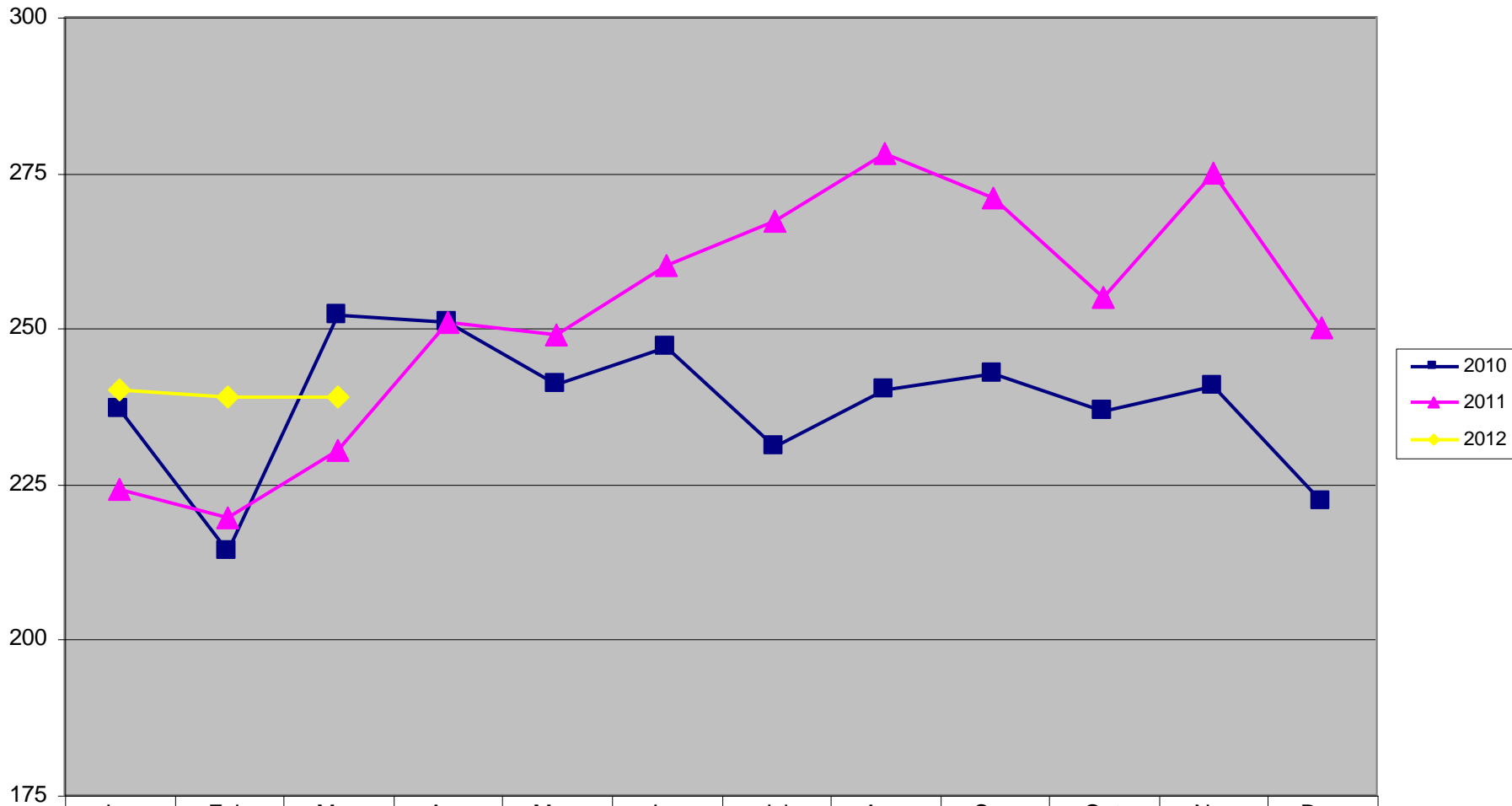
3 Numbers are based on Average Daily Population.

Average Daily Population - Males



	Jan	Feb	Mar	Apr	May	Jun	Jul	Aug	Sep	Oct	Nov	Dec
2010	2,442	2,354	2,379	2,461	2,473	2,480	2,486	2,567	2,546	2,530	2,484	2,325
2011	2,370	2,251	2,325	2,439	2,399	2,446	2,449	2,437	2,515	2,563	2,537	2,361
2012	2,417	2,236	2,206									

Average Daily Population - Females



■ 2010	237	214	252	251	241	247	231	240	243	237	241	222
▲ 2011	224	220	230	251	249	260	267	278	271	255	275	250
◆ 2012	240	239	239									

Jail Court Report

March-12

Jail Court Stats	This Month to Last Month				Same Month Last Year			Year to Date (Last Year/This Year)			
	Mar-12	Feb-12	(+/-)	% Chng	Mar-11	(+/-)	% Chng	2012	2011	(+/-)	% Chng
Inmates in Gen. Sessions Cases Pending	726	710	16	2%	713	13	2%	2264	2120	144	7%
Less than One Month	555	501	54	11%	574	-19	-3%	1622	1581	41	3%
One to Five Months	159	202	-43	-21%	134	25	19%	616	515	101	20%
Six to Eleven Months	7	6	1	17%	3	4	133%	16	14	2	14%
One Year or Greater	5	1	4	400%	2	3	150%	10	10	0	0%
Inmates in Gen. Sessions Pending by Offense	726	710	16	2%	713	13	2%	2264	2120	144	7%
Felony	494	487	7	1%	481	13	3%	1550	1472	78	5%
Misdemeanor	232	223	9	4%	232	0	0%	714	648	66	10%
Inmates in Criminal Court Cases Pending	756	755	1	0%	852	-96	-11%	2321	2659	-338	-13%
Less than One Month	82	74	8	11%	106	-24	-23%	213	243	-30	-12%
One to Five Months	231	271	-40	-15%	227	4	2%	815	757	58	8%
Six to Eleven Months	238	208	30	14%	264	-26	-10%	672	837	-165	-20%
One to Two Years	191	187	4	2%	238	-47	-20%	575	768	-193	-25%
Three Years or Greater	14	15	-1	-7%	17	-3	-18%	46	54	-8	-15%
Inmates in Criminal Court Pending by Offense	756	755	1	0%	852	-96	-11%	2321	2659	-338	-13%
Felony	746	746	0	0%	839	-93	-11%	2295	2623	-328	-13%
Misdemeanor	10	9	1	11%	13	-3	-23%	26	36	-10	-28%
HTS Not Indicted (current Incarc.)	274	296	-22	-7%	269	5	2%	919	845	74	9%
Less than Six Months	252	281	-29	-10%	252	0	0%	866	787	79	10%
Six to Eleven Months	19	12	7	58%	15	4	27%	46	55	-9	-16%
One Year or Greater	3	3	0	0%	2	1	50%	7	3	4	133%
Booked One or More Drug Charges	628	684	-56	-8%	785	-157	-20%	1921	1917	4	0%
Male	535	578	-43	-7%	685	-150	-22%	1618	1661	-43	-3%
Female	93	106	-13	-12%	100	-7	-7%	303	256	47	18%

Green: decrease Red: increase

HTS (Held-to-State)

ROR (Release on Recognizance)

Jail Security Operations Report

March-12

Jail Sec Ops Stats	This Month to Last Month				Same Month Last Year			Year to Date (Last Year/This Year)			
	Mar-12	Feb-12	(+/-)	% Chng	Mar-11	(+/-)	% Chng	2012	2011	(+/-)	% Chng
Total 30 day Entire Area Shakedowns	332	334	-2	-1%	322	10	3%	1,001	960	41	4%
Scheduled Shakedowns	102	102	0	0%	102	0	0%	306	306	0	0%
(Repeat) Scheduled & Unscheduled Shkdw	230	232	-2	-1%	220	10	5%	695	654	41	6%
Serious Violent Incidents	0	0	0	0%	2	-2	-100%	0	4	-4	-100%
Use of Force	22	27	-5	-19%	20	2	10%	88	68	20	29%
Planned	6	5	1	20%	1	5	500%	18	6	12	200%
Unplanned	16	22	-6	-27%	19	-3	-16%	70	62	8	13%
Chemical	9	15	-6	-40%	10	-1	-10%	45	44	1	2%
Restraint Chair (Security)	2	5	-3	-60%	0	2	0%	11	0	11	0%
4 Point Bed Restraints (Medical)	0	0	0	0%	0	0	0%	0	0	0	0%
Fire Drills	5	6	-1	-17%	7	-2	-29%	17	19	-2	-11%
Fire Drill Deficiencies	1	0	1	0%	1	0	0%	1	1	0	0%
Medical Drill	3	3	0	0%	0	3	0%	9	0	9	0%
Medical Drill Deficiencies	0	0	0	0%	0	0	0%	0	0	0	0%

Green: decrease Red: increase

* Medical Drill Deficiencies added Jan 12 per Chief McGhee

Jail Contraband Report

March-12

Jail Contraband	This Month to Last Month				Same Month Last Year			Year to Date (Last Year/This Year)			
	Mar-12	Feb-12	(+/-)	% Chng	Mar-11	(+/-)	% Chng	2012	2011	(+/-)	% Chng
201 Poplar	41	19	22	116%	44	-3	-7%	93	84	9	11%
Tobacco	1	0	1	0%	6	-5	-83%	2	12	-10	-83%
Marijuana	2	4	-2	-50%	9	-7	-78%	6	15	-9	-60%
Crack/Cocaine	1	0	1	0%	0	1	0%	1	1	0	0%
Prescribed Meds	6	2	4	200%	1	5	500%	15	8	7	88%
Weapons	2	2	0	0%	2	0	0%	11	2	9	450%
Money	5	6	-1	-17%	4	1	25%	14	7	7	100%
Other	24	5	19	380%	22	2	9%	44	39	5	13%
Contraband by Shift	41	19	22	116%	44	-3	-7%	93	84	9	11%
6 - 2 Shift	14	8	6	75%	19	-5	-26%	39	38	1	3%
2-10 Shift	24	8	16	200%	21	3	14%	48	41	7	17%
10 - 6 Shift	3	3	0	0%	4	-1	-25%	6	5	1	20%
Contraband by Floor	41	19	22	116%	44	-3	-7%	93	84	9	11%
6th Floor	0	2	-2	-100%	3	-3	-100%	5	6	-1	-17%
5th Floor	4	0	4	0%	1	3	300%	5	6	-1	-17%
4th Floor	3	4	-1	-25%	9	-6	-67%	15	19	-4	-21%
3rd Floor	16	2	14	700%	4	12	300%	24	7	17	243%
2nd Floor	7	3	4	133%	8	-1	-13%	10	11	-1	-9%
1st Floor Admin Seg	2	2	0	0%	1	1	100%	8	3	5	167%
JM Housing	0	0	0	0%	0	0	0%	0	0	0	0%
Lower Level North	0	0	0	0%	0	0	0%	1	0	1	0%
Lower Level	3	0	3	0%	10	-7	-70%	8	15	-7	-47%
Tunnel	0	0	0	0%	0	0	0%	0	0	0	0%
Annex	2	0	2	0%	6	-4	-67%	6	13	-7	-54%
Intake	4	6	-2	-33%	2	2	100%	11	4	7	175%

Green: decrease Red: increase

Jail PREA Report

201 Poplar					Jail East			
Month 2012	Sexual Battery to Inmate	Sexual Battery to Staff	Alleged Rape	Rape	Sexual Battery to Inmate	Sexual Battery to Staff	Alleged Rape	Rape
Jan	1	0	0	0	1	0	0	0
Feb	0	0	1	0	0	0	0	0
Mar	1	0	1	0	0	0	0	0
Apr								
May								
Jun								
Jul								
Aug								
Sep								
Oct								
Nov								
Dec								
Total	2	0	2	0	1	0	0	0

All charge adjustments or criminal charges for these incidents will be addressed by the BOPSI office.

Jail Human Resource Report

March-12

Jail Human Resource	This Month to Last Month				Same Month Last Year			Year to Date (Last Year/This Year)			
	Mar-12	Feb-12	(+/-)	% Chng	Mar-11	(+/-)	% Chng	2012	2011	(+/-)	% Chng
Daily Avg Employees on Sick Leave	123	116	7	6%	100	23	23%	113	90	23	25%
Daily Avg Regular Sick Leave	42	44	-2	-5%	36	6	17%	41	34	7	20%
Security Staff	36	38	-2	-5%	31	5	16%	35	29	6	22%
Support Staff	6	6	0	0%	5	1	20%	5	5	0	7%
Daily Avg Extended Sick Leave	81	72	9	13%	64	17	27%	72	56	16	29%
Extended Sick Leave	32	28	4	14%	25	7	28%	27	19	7	38%
FMLA	41	40	1	3%	34	7	21%	40	31	8	27%
OJI	7	3	4	133%	5	2	40%	5	5	0	-7%
Maternity	0	1	-1	-100%	0	0	0%	1	0	0	100%
Disability	1	0	1	0%	0	1	0%	0	0	0	0%
Total Over Time (Hours)	6711	8387	-1676	-20%	1596	5115	320%	19802	4470	15332	343%
Total Dismissed Cases	20	6	14	233%	23	-3	-13%	39	58	-19	-33%
Attendance Disciplinary	20	18	2	11%	26	-6	-23%	67	91	-24	-26%
Total Major and Minor Infractions	37	27	10	37%	32	5	16%	94	136	-42	-31%
6 - 2 Shift	21	12	9	75%	21	0	0%	46	86	-40	-47%
2 - 10 Shift	4	4	0	0%	6	-2	-33%	17	20	-3	-15%
10 - 6 Shift	9	7	2	29%	5	4	80%	20	29	-9	-31%
Jail East	3	4	-1	-25%	0	3	0%	11	1	10	1000%
Employee Disciplinary Infractions	0	49	-49	-100%	54	-54	-100%	94	227	-133	-59%
Disciplinary Violation Type	0	54	-54	-100%	73	-73	-100%	103	279	-176	-63%
*Force	0	0	0	0%	0	0	0%	0	0	0	0%
Attendance	0	29	-29	-100%	43	-43	-100%	62	194	-132	-68%
Conduct	0	7	-7	-100%	15	-15	-100%	18	36	-18	-50%
Performance	0	18	-18	-100%	15	-15	-100%	23	49	-26	-53%
Total Drug Tests	0	61	-61	-100%	0	0	0%	124	145	-21	-14%
Pass	0	61	-61	-100%	0	0	0%	124	145	-21	-14%
Fail/Resign	0	0	0	0%	0	0	0%	0	0	0	0%

Green: decrease Red: increase

*SOS training of new system started Feb 2011

Jail Medical Report - 201 Poplar

March-12

Jail Medical Stats - 201	This Month to Last Month				Same Month Last Year			Year to Date (Last Year/This Year)			
	Mar-12	Feb-12	(+/-)	% Chng	Mar-11	(+/-)	% Chng	2012	2011	(+/-)	% Chng
Health Assessments	794	706	88	12%	746	48	6%	2347	1978	369	19%
Health Assessment Completion Ratio	100%	100%	0%	0%	89%	11%	12%	100%	96%	4%	4%
Treatments	566	409	157	38%	645	-79	-12%	1570	1987	-417	-21%
Total Sick-Call	1390	1107	283	26%	1401	-11	-1%	3912	4144	-232	-6%
Total Sick-Call Completion Ratio	82%	51%	31%	61%	75%	7%	9%	74%	82%	-8%	-10%
MD Sick-Call	213	205	8	4%	307	-94	-31%	544	679	-135	-20%
PA Sick-Call	292	292	0	0%	252	40	16%	873	846	27	3%
Nurse Sick-Call	885	610	275	45%	842	43	5%	2495	2619	-124	-5%
Total Visits	2419	2498	-79	-3%	1876	543	29%	7269	5932	1337	23%
Walk-In Visits	1769	1711	58	3%	1103	666	60%	5114	3842	1272	33%
Dental Visits	266	371	-105	-28%	364	-98	-27%	1046	1003	43	4%
Psychiatric Visits	384	416	-32	-8%	409	-25	-6%	1109	1087	22	2%
Diabetic Inmates (daily avg)²	74	80	-6	-8%	71	3	4%	78	68	10	15%
Number of PPDs Given	3138	2930	208	7%	3617	-479	-13%	9086	9423	-337	-4%
Number of PPDs Read	1315	1198	117	10%	1586	-271	-17%	3892	4046	-154	-4%
Number of Positive PPDs	46	29	17	59%	51	-5	-10%	118	139	-21	-15%
Inmates on TB Meds (daily avg)	33	38	-5	-13%	35	-2	-6%	35	39	-4	-11%
Inmates on HIV Meds (daily avg)	19	17	2	12%	23	-4	-17%	18	19	-1	-5%
Clinic Appointments	118	101	17	17%	98	20	20%	365	362	3	1%
Treated at Clinic	94	77	17	22%	69	25	36%	283	269	14	5%
Released before Treated at Clinic	24	24	0	0%	29	-5	-17%	82	93	-11	-12%
Total Referrals	10	20	-10	-50%	40	-30	-75%	36	85	-49	-58%
ER Referrals	9	17	-8	-47%	35	-26	-74%	30	77	-47	-61%
Offsite Mental Health Referrals	1	3	-2	-67%	5	-4	-80%	6	8	-2	-25%
MRSA	6	1	5	500%	0	6	0%	13	3	10	333%
Less than 30 days	2	0	2	0%	0	2	0%	6	0	6	0%
Greater than 30 days	4	1	3	300%	0	4	0%	7	3	4	133%
MRSA Requiring Isolation	0	0	0	0%	0	0	0%	0	0	0	0%
Total Wounds Cultured	6	1	5	500%	1	5	500%	13	4	9	225%
Total (+) Wound Cultures	4	1	3	300%	0	4	0%	6	3	3	100%

Green: decrease Red: increase

*Total Sick Call Completion Ratio was done up to May 26, 2011

* Note: All cases of suspected MRSA are treated, regardless of confirmed diagnosis by culture. These number contain both confirmed and suspected cases of MRSA.

Jail Maintenance Report

March-12

Jail Maintenance Stats	<i>This Month to Last Month</i>				<i>Same Month Last Year</i>			<i>Year to Date (Last Year/This Year)</i>			
	Mar-12	Feb-12	(+/-)	% Chng	Mar-11	(+/-)	% Chng	2012	2011	(+/-)	% Chng
Work Orders Submitted	1586	1489	97	7%	1432	154	11%	4428	4075	353	9%
Completed Work Orders	1577	1484	93	6%	1422	155	11%	4404	4034	370	9%
Pending	9	5	4	80%	10	-1	-10%	24	41	-17	-41%
Repeat Work Orders	0	0	0	0%	3	-3	-100%	0	3	-3	-100%
Duplicate Work Orders	0	1	-1	-100%	0	0	0%	1	0	1	0%
PM Action / Inspection	161	161	0	0%	130	31	24%	472	380	92	24%
No Problem Found	21	14	7	50%	14	7	50%	56	46	10	22%
Not Respond by Following Day	0	0	0	0%	0	0	0%	0	0	0	0%

Green: decrease Red: increase

*Repeat work orders are the orders that are worked on again

*Duplicate work orders are tickets that were submitted more than once - no more work done

Environmental Report

March-12

Environmental Stats	This Month to Last Month				Same Month Last Year			Year to Date (Last Year/This Year)			
	Mar-12	Feb-12	(+/-)	% Chng	Mar-11	(+/-)	% Chng	2012	2011	(+/-)	% Chng
Kitchen Inspections	38	32	6	19%	40	-2	-5%	106	108	-2	-2%
6-2 Shift	19	16	3	19%	20	-1	-5%	53	54	-1	-2%
10-6 Shift	19	16	3	19%	20	-1	-5%	53	54	-1	-2%
Kitchen Inspection Deficiencies	160	125	35	28%	174	-14	-8%	450	447	3	1%
Kitchen Reinspection Deficiencies	47	37	10	27%	51	-4	-8%	130	131	-1	-1%
Floor Inspections - Deficiencies	202	204	-2	-1%	166	36	22%	593	504	89	18%
6th Floor	7	8	-1	-13%	2	5	250%	20	6	14	233%
5th Floor	4	6	-2	-33%	5	-1	-20%	15	11	4	36%
4th Floor	46	35	11	31%	35	11	31%	122	108	14	13%
3rd Floor	36	32	4	13%	34	2	6%	102	95	7	7%
2nd Floor	31	38	-7	-18%	34	-3	-9%	96	105	-9	-9%
1st Floor Admin. Seg.	14	15	-1	-7%	8	6	75%	40	31	9	29%
Intake & Release	12	12	0	0%	12	0	0%	38	35	3	9%
Lower Level South	20	25	-5	-20%	19	1	5%	64	53	11	21%
Lower Level North	0	0	0	0%	9	-9	-100%	12	23	-11	-48%
Annex	14	14	0	0%	0	14	0%	42	15	27	180%
Jail East	18	19	-1	-5%	8	10	125%	42	22	20	91%
Repeat Deficiencies	67	80	-13	-16%	93	-26	-28%	225	250	-25	-10%
6th Floor	3	1	2	200%	1	2	200%	6	2	4	200%
5th Floor	0	2	-2	-100%	2	-2	-100%	4	4	0	0%
4th Floor	28	24	4	17%	22	6	27%	74	61	13	21%
3rd Floor	7	10	-3	-30%	17	-10	-59%	32	49	-17	-35%
2nd Floor	11	15	-4	-27%	19	-8	-42%	34	53	-19	-36%
1st Floor Admin. Seg.	8	5	3	60%	5	3	60%	18	18	0	0%
Intake & Release	2	4	-2	-50%	6	-4	-67%	14	18	-4	-22%
Lower Level South	5	12	-7	-58%	14	-9	-64%	26	32	-6	-19%
Lower Level North	0	0	0	0%	6	-6	-100%	2	10	-8	-80%
Annex	3	5	-2	-40%	0	3	0%	13	2	11	550%
Jail East	0	2	-2	-100%	1	-1	-100%	2	1	1	100%

Green: decrease Red: increase

Jail Operations Report

March-12

Jail Training Stats	This Month to Last Month				Same Month Last Year			Year to Date (Last Year/This Year)			
	Mar-12	Feb-12	(+/-)	% Chng	Mar-11	(+/-)	% Chng	2012	2011	(+/-)	% Chng
Total Number of Staffs Trained	170	134	36	27%	174	-4	-2%	325	471	-146	-31%
Orientation	2	12	-10	-83%	4	-2	-50%	16	12	4	33%
In Service	132	109	23	21%	109	23	21%	241	174	67	39%
FTO/In House	5	0	5	0%	0	5	0%	8	127	-119	-94%
Specialized Training	8	0	8	0%	41	-33	-80%	20	95	-75	-79%
Conferences	0	0	0	0%	0	0	0%	4	2	2	100%
Tours	23	13	10	77%	20	3	15%	36	61	-25	-41%

Jail CIT	This Month to Last Month				Same Month Last Year			Year to Date (Last Year/This Year)			
	Mar-12	Feb-12	(+/-)	% Chng	Mar-11	(+/-)	% Chng	2012	2011	(+/-)	% Chng
Callouts	7	2	5	250%	2	5	250%	10	11	-1	-9%
6 - 2 Shift	2	0	2	0%	1	1	100%	2	6	-4	-67%
2 - 10 Shift	5	2	3	150%	1	4	400%	8	5	3	60%
10 - 6 Shift	0	0	0	0%	0	0	0%	0	0	0	0%
Referrals	3	2	1	50%	0	3	0%	5	2	3	150%
6 - 2 Shift	1	0	1	0%	0	1	0%	1	2	-1	-50%
2 - 10 Shift	2	2	0	0%	0	2	0%	4	0	4	0%
10 - 6 Shift	0	0	0	0%	0	0	0%	0	0	0	0%

Jail Food Services Stats	This Month to Last Month				Same Month Last Year			Year to Date (Last Year/This Year)			
	Mar-12	Feb-12	(+/-)	% Chng	Mar-11	(+/-)	% Chng	2012	2011	(+/-)	% Chng
Total Meals Served	257,310	245,638	11,672	5%	272,185	-14,875	-5%	782,698	780,691	2,007	0%
Inmates Meals	203,212	193,365	9,847	5%	213,686	-10,474	-5%	620,701	620,133	568	0%
Employee Meals	9,939	10,487	-548	-5%	11,237	-1,298	-12%	31,485	31,448	37	0%
Jail East Inmate Meals	25,391	23,388	2,003	9%	27,469	-2,078	-8%	74,157	73,749	408	1%
Jail East Employee Meals	5,425	5,075	350	7%	5,950	-525	-9%	15,925	16,275	-350	-2%
Sack Lunches	13,343	13,323	20	0%	13,843	-500	-4%	40,430	39,086	1,344	3%

Jail Fiduciary Stats	This Month to Last Month				Same Month Last Year			Year to Date (Last Year/This Year)			
	Mar-12	Feb-12	(+/-)	% Chng	Mar-11	(+/-)	% Chng	2012	2011	(+/-)	% Chng
201 Poplar Dress Out	3441	3000	441	15%	2870	571	20%	9588	8469	1119	13%
Jail East Dress Out	730	686	44	6%	1081	-351	-32%	2122	2783	-661	-24%
Property Damage Charged	\$0	\$9	-9	-100%	\$0	0	0%	\$23	\$23	0	0%
Property Damage Collected	\$0	\$3	-3	-100%	\$5	-5	-100%	\$14	\$51	-37	-72%
Medical Activity Charged	\$5,479	\$2,947	2532	86%	\$3,975	1504	38%	\$13,014	\$11,346	1668	15%
Medical Activity Collected	\$2,101	\$1,342	759	57%	\$2,900	-799	-28%	\$4,976	\$8,678	-3703	-43%

Green: decrease Red: increase

PERSONNEL - JAIL DIVISION					
	ANNUAL BUDGET	TO DATE (JULY-MAR.) ACTIVITY	REMAINING BALANCE	% USED	% BAL
	72,362,121	49,742,576	22,619,545	69%	31%

PLAN VS ACTUAL (9 OF 12 PERIODS REPORTING)				
	PLAN 9/12	ACTUAL 9/12	VARIANCE TO DATE	(+) OR (-)
	\$54,271,591	\$49,742,576	\$4,529,015	8%

O & M - JAIL DIVISION					
	TOTAL BUDGET	TO DATE (JULY-MAR.) ACTIVITY	REMAINING BALANCE	% USED	% BAL
	\$10,184,359	\$5,905,373	\$4,278,986	58%	42%
	TOTAL OBLIGATED	\$9,243,665	\$940,694	91%	9%

PLAN VS ACTUAL (9 OF 12 PERIODS REPORTING)				
	PLAN 9/12	ACTUAL 9/12	VARIANCE TO DATE	(+) OR (-)
	7,638,269	5,905,373	1,732,896	23%

TOTAL - JAIL DIVISION					
	TOTAL BUDGET	TO DATE (JULY-MAR.) ACTIVITY	REMAINING BALANCE	% USED	% BAL
	\$82,546,480	\$55,647,949	\$26,898,531	67%	33%

PLAN VS ACTUAL (9 OF 12 PERIODS REPORTING)				
	PLAN 9/12	ACTUAL 9/12	VARIANCE TO DATE	(+) OR (-)
	61,909,860	55,647,949	6,261,911	10%

Jail Classifications Report

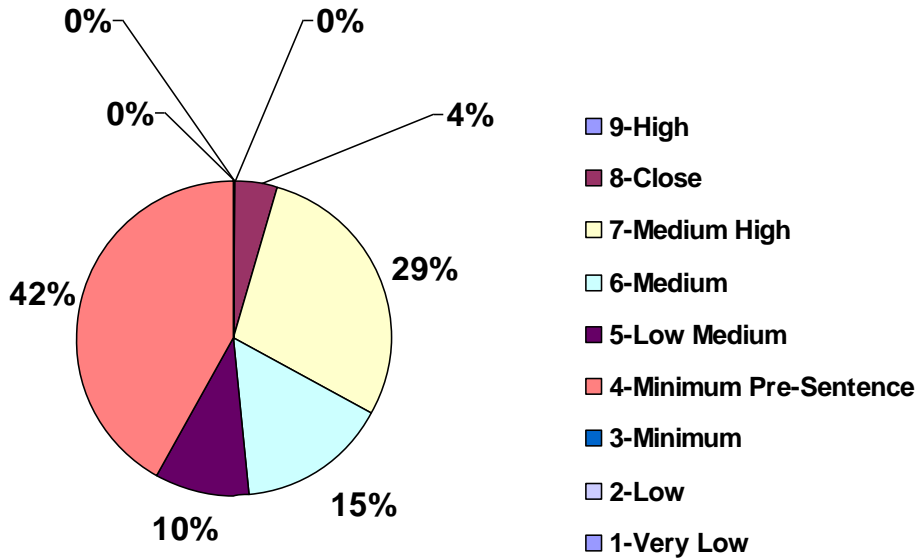
March-12

Male Jail Classifications Stats	This Month to Last Month				Same Month Last Year			Year to Date (Last Year/This Year)			
	Mar-12	Feb-12	(+/-)	% Chng	Mar-11	(+/-)	% Chng	2012	2011	(+/-)	% Chng
Total Primary Classifications	4662	3892	770	20%	5112	-450	-9%	13198	13118	80	1%
Primary Classification 201 Poplar	3652	3048	604	20%	3966	-314	-8%	10369	10257	112	1%
Maximum Security Level	168	151	17	11%	165	3	2%	475	470	5	1%
9-High	9	14	-5	-36%	19	-10	-53%	31	35	-4	-11%
8-Close	159	137	22	16%	146	13	9%	444	435	9	2%
Medium Security Level	1950	1730	220	13%	2286	-336	-15%	5634	5877	-243	-4%
7-Medium High	1042	883	159	18%	1130	-88	-8%	2998	2947	51	2%
6-Medium	559	499	60	12%	652	-93	-14%	1572	1726	-154	-9%
5-Low Medium	349	348	1	0%	504	-155	-31%	1064	1204	-140	-12%
Minimum Security Level	1534	1167	367	31%	1515	19	1%	4260	3910	350	9%
4-Minimum Pre-Sentence	1529	1165	364	31%	1479	50	3%	4243	3839	404	11%
3-Minimum	0	0	0	0%	0	0	0%	0	0	0	0%
2-Low	1	0	1	0%	5	-4	-80%	3	9	-6	-67%
1-Very Low	4	2	2	100%	31	-27	-87%	14	62	-48	-77%
Avg Male Inmates In PC	7	7	0	0%	4	3	75%	7	4	3	91%
Female Jail Classifications Stats	This Month to Last Month				Same Month Last Year			Year to Date (Last Year/This Year)			
	Mar-12	Feb-12	(+/-)	% Chng	Mar-11	(+/-)	% Chng	2012	2011	(+/-)	% Chng
Primary Classification Jail East	1010	844	166	20%	1146	-136	-12%	2829	2861	-32	-1%
Maximum Security Level	10	3	7	233%	10	0	0%	16	26	-10	-38%
9-High	0	0	0	0%	0	0	0%	0	0	0	0%
8-Close	10	3	7	233%	10	0	0%	16	26	-10	-38%
Medium Security Level	371	345	26	8%	486	-115	-24%	1101	1244	-143	-11%
7-Medium High	98	106	-8	-8%	134	-36	-27%	322	341	-19	-6%
6-Medium	161	112	49	44%	204	-43	-21%	415	553	-138	-25%
5-Low Medium	112	127	-15	-12%	148	-36	-24%	364	350	14	4%
Minimum Security Level	629	496	133	27%	650	-21	-3%	1712	1591	121	8%
4-Minimum Pre-Sentence	629	496	133	27%	650	-21	-3%	1712	1591	121	8%
3-Minimum	0	0	0	0%	0	0	0%	0	0	0	0%
2-Low	0	0	0	0%	0	0	0%	0	0	0	0%
1-Very Low	0	0	0	0%	0	0	0%	0	0	0	0%
Avg Female Inmates In PC	0	0	0	0%	0	0	0%	0	0	0	0%
Total Classification Reviews	566	667	-101	-15%	522	44	8%	1835	1826	9	0%
Overrides	39	26	13	50%	49	-10	-20%	113	122	-9	-7%
AVG Primary Classifications per Day	150	134	16	12%	165	-15	-9%	145	146	-1	-1%
AVG Classification Reviews per Day	18	23	-5	-22%	17	1	6%	20	20	0	-2%

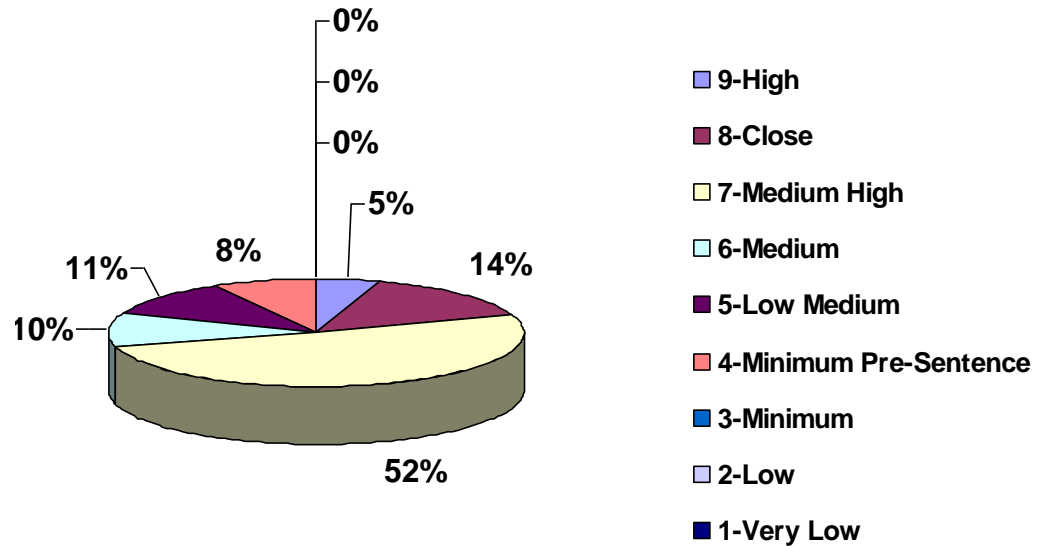
Green: decrease Red: increase

Note: Total Primary Classifications will not equal to Total Bookings reported in Jail Population Report due to qui PC stands for Protective Custody.

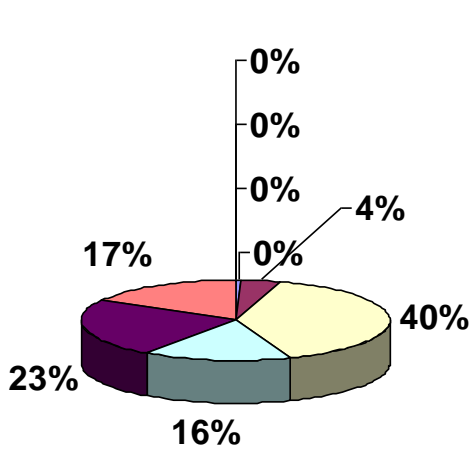
Primary Classification - Intake Custody Level of Male Inmates



Male Custody Level - Population

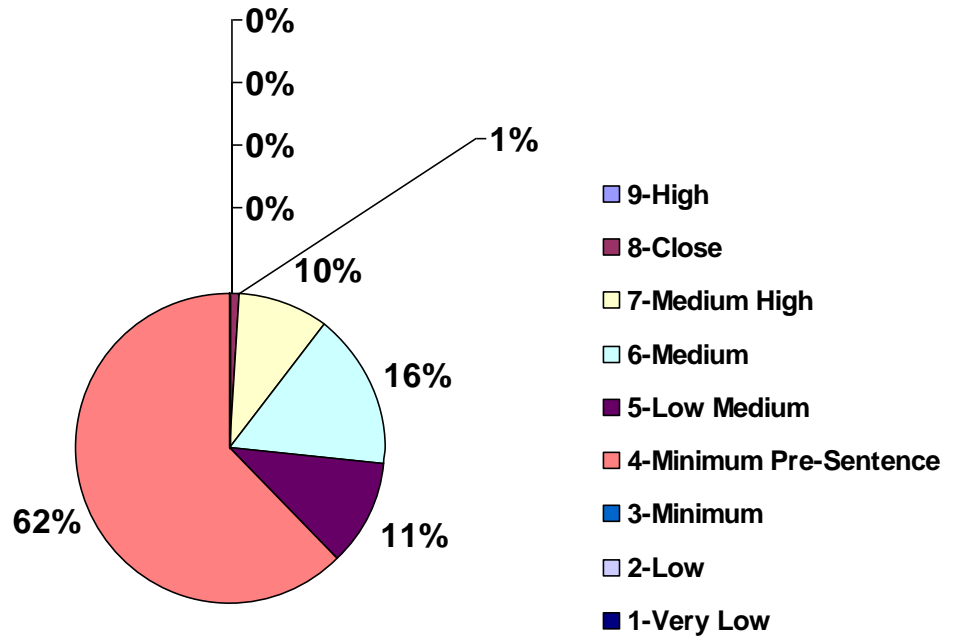


Female Custody Level - Population



- 9-High
- 8-Close
- 7-Medium High
- 6-Medium
- 5-Low Medium
- 4-Minimum Pre-Sentence
- 3-Minimum
- 2-Low
- 1-Very Low

Primary Classification - Intake Custody Level of Female Inmates



- 9-High
- 8-Close
- 7-Medium High
- 6-Medium
- 5-Low Medium
- 4-Minimum Pre-Sentence
- 3-Minimum
- 2-Low
- 1-Very Low

Immigration, Custom and Enforcement

Month/Year	Interviewed		Referred to ICE		Released to ICE	
	Males	Females	Males	Females	Males	Females
March-11	4132	1199	42	7	29	5
April-11	3640	982	19	7	19	5
May-11	3788	1094	25	4	22	1
June-11	3579	1142	29	3	29	3
July-11	3554	1089	30	10	20	2
August-11	3902	1073	31	5	25	3
September-11	3561	932	28	8	28	8
October-11	3418	908	24	4	23	2
November-11	3222	1001	31	5	22	0
December-11	3119	897	31	5	15	0
January-12	3515	974	16	6	16	4
February-12	3529	936	17	7	11	2
March-12	3906	1097	35	5	33	5
TOTAL	46865	13324	358	76	292	40

Transitional Towers - Programs Transcend

March-12



Incidents	This Month to Last Month				Same Month Last Year			Year to Date (Last Year/This Year)			
	Mar-12	Feb-12	(+/-)	% Chng	Mar-11	(+/-)	% Chng	2012	2011	(+/-)	% Chng
6th Floor	25	23	2	9%	45	-20	-44%	102	117	-15	-13%
Assaultive	0	0	0	0%	0	0	0%	0	2	-2	-100%
Non- Assaultive	25	21	4	19%	42	-17	-40%	97	109	-12	-11%
Contraband	0	2	-2	-100%	3	-3	-100%	5	6	-1	-17%
5th Floor	31	39	-8	-21%	28	3	11%	100	101	-1	-1%
Assaultive	0	2	-2	-100%	0	0	0%	4	2	2	100%
Non- Assaultive	27	37	-10	-27%	27	0	0%	92	93	-1	-1%
Contraband	4	0	4	0%	1	3	300%	4	6	-2	-33%

Programs	This Month to Last Month				Same Month Last Year			Year to Date (Last Year/This Year)			
	Mar-12	Feb-12	(+/-)	% Chng	Mar-11	(+/-)	% Chng	2012	2011	(+/-)	% Chng
Participants	1562	1372	190	14%	1230	332	27%	4140	3703	437	12%
Alcohol & Drugs	157	84	73	87%	92	65	71%	312	282	30	11%
Anger Management	158	143	15	10%	149	9	6%	436	454	-18	-4%
MCS	0	0	0	0%	0	0	0%	0	0	0	0%
HIV	0	33	-33	-100%	0	0	0%	33	0	33	0%
MRT	44	99	-55	-56%	106	-62	-58%	225	314	-89	-28%
Real Talk	653	452	201	44%	471	182	39%	1570	1423	147	10%
L.I.F.E.	125	223	-98	-44%	162	-37	-23%	539	482	57	12%
Life Skill	115	110	5	5%	131	-16	-12%	292	388	-96	-25%
Job Readiness	151	228	-77	-34%	79	72	91%	574	231	343	148%
Pre GED	0	0	0	0%	23	-23	-100%	0	66	-66	-100%
Restrictive Studies	0	0	0	0%	0	0	0%	0	0	0	0%
Domestic Violence Awareness	159	0	159	0%	0	159	0%	159	0	159	0%
Sessions	40	35	5	14%	49	-9	-18%	110	146	-36	-25%
Alcohol & Drugs	3	2	1	50%	2	1	50%	7	6	1	17%
Anger Management	4	4	0	0%	4	0	0%	12	12	0	0%
MCS	0	0	0	0%	0	0	0%	0	0	0	0%
HIV	0	1	-1	-100%	0	0	0%	1	0	1	0%
MRT	4	4	0	0%	8	-4	-50%	13	24	-11	-46%
Real Talk	13	10	3	30%	18	-5	-28%	35	53	-18	-34%
L.I.F.E.	3	5	-2	-40%	4	-1	-25%	12	12	0	0%
Life Skill	4	4	0	0%	4	0	0%	12	12	0	0%
Job Readiness	5	5	0	0%	4	1	25%	14	12	2	17%
Pre GED	0	0	0	0%	3	-3	-100%	0	9	-9	-100%
Restrictive Studies	0	0	0	0%	0	0	0%	0	0	0	0%
Domestic Violence Awareness	4	0	4	0%	0	4	0%	4	0	4	0%

Religious Services	This Month to Last Month				Same Month Last Year			Year to Date (Last Year/This Year)			
	Mar-12	Feb-12	(+/-)	% Chng	Mar-11	(+/-)	% Chng	2012	2011	(+/-)	% Chng
Total Worship Participants	923	516	407	79%	793	130	16%	2118	2136	-18	-1%
Chaplain Worship	601	332	269	81%	636	-35	-6%	1288	1692	-404	-24%
Volunteer (Christian, Muslim) Worship	322	184	138	75%	157	165	105%	830	444	386	87%
Total Worship Sessions	24	19	5	26%	21	3	14%	66	60	6	10%
Chaplain Worship	12	9	3	33%	15	-3	-20%	31	45	-14	-31%
Volunteer (Christian, Muslim) Worship	12	10	2	20%	6	6	100%	35	15	20	133%

Green: decrease Red: increase

Counting incident numbers not offenses.

* Restrictive Studies started Feb12 * Domestic Violence Awareness started Mar12

Hopeville North and South

March-12

Incidents	This Month to Last Month				Same Month Last Year			Year to Date (Last Year/This Year)			
	Mar-12	Feb-12	(+/-)	% Chng	Mar-11	(+/-)	% Chng	2012	2011	(+/-)	% Chng
4th Floor Unit	238	229	9	4%	252	-14	-6%	724	735	-11	-1%
Assaultive	11	10	1	10%	15	-4	-27%	33	39	-6	-15%
Non- Assaultive	224	215	9	4%	228	-4	-2%	676	678	-2	0%
Contraband	3	4	-1	-25%	9	-6	-67%	15	18	-3	-17%

Programs	This Month to Last Month				Same Month Last Year			Year to Date (Last Year/This Year)			
	Mar-12	Feb-12	(+/-)	% Chng	Mar-11	(+/-)	% Chng	2012	2011	(+/-)	% Chng
Participant	1551	1553	-2	0%	1575	-24	-2%	4473	4639	-166	-4%
Alcohol & Drugs	118	81	37	46%	82	36	44%	281	243	38	16%
Anger Management	302	315	-13	-4%	288	14	5%	936	864	72	8%
Moral Reconciliation Therapy	365	376	-11	-3%	413	-48	-12%	993	1234	-241	-20%
MCS	12	26	-14	-54%	28	-16	-57%	62	80	-18	-23%
HIV	0	0	0	0%	41	-41	-100%	0	41	-41	-100%
Life Skills	286	291	-5	-2%	291	-5	-2%	863	878	-15	-2%
Inside Out Dad	33	40	-7	-18%	28	5	18%	98	86	12	14%
Real Talk	435	424	11	3%	326	109	33%	1240	981	259	26%
Sessions	52	49	3	6%	50	2	4%	149	148	1	1%
Alcohol & Drugs	3	2	1	50%	2	1	50%	7	6	1	17%
Anger Management	8	8	0	0%	8	0	0%	25	24	1	4%
Moral Reconciliation Therapy	10	10	0	0%	12	-2	-17%	27	36	-9	-25%
MCS	6	6	0	0%	4	2	50%	20	12	8	67%
HIV	0	0	0	0%	1	-1	-100%	0	1	-1	-100%
Life Skills	8	8	0	0%	8	0	0%	24	24	0	0%
Inside Out Dad	4	4	0	0%	4	0	0%	12	12	0	0%
Real Talk	13	11	2	18%	9	4	44%	34	27	7	26%

Religious Services	This Month to Last Month				Same Month Last Year			Year to Date (Last Year/This Year)			
	Mar-12	Feb-12	(+/-)	% Chng	Mar-11	(+/-)	% Chng	2012	2011	(+/-)	% Chng
Total Worship Participants	352	312	40	13%	302	50	17%	880	1008	-128	-13%
Chaplain Worship	140	141	-1	-1%	151	-11	-7%	349	592	-243	-41%
Volunteer (Christian, Muslim) Worship	212	171	41	24%	151	61	40%	531	416	115	28%
Total Worship Sessions	19	22	-3	-14%	17	2	12%	60	61	-1	-2%
Chaplain Worship	7	7	0	0%	9	-2	-22%	19	37	-18	-49%
Volunteer (Christian, Muslim) Worship	12	15	-3	-20%	8	4	50%	41	24	17	71%

Green: decrease Red: increase

Counting incident numbers not offenses.

Poplar Place

March-12



Incidents	This Month to Last Month				Same Month Last Year			Year to Date (Last Year/This Year)			
	Mar-12	Feb-12	(+/-)	% Chng	Mar-11	(+/-)	% Chng	2012	2011	(+/-)	% Chng
3rd Floor	215	165	50	30%	167	48	29%	502	439	63	14%
Assaultive	3	4	-1	-25%	5	-2	-40%	14	20	-6	-30%
Non- Assaultive	197	159	38	24%	158	39	25%	466	412	54	13%
Contraband	15	2	13	650%	4	11	275%	22	7	15	214%

Programs	This Month to Last Month				Same Month Last Year			Year to Date (Last Year/This Year)			
	Mar-12	Feb-12	(+/-)	% Chng	Mar-11	(+/-)	% Chng	2012	2011	(+/-)	% Chng
Participants	1813	1716	97	6%	1517	296	20%	4906	4470	436	10%
Alcohol & Drugs	75	74	1	1%	84	-9	-11%	212	243	-31	-13%
Anger Management	324	329	-5	-2%	343	-19	-6%	929	1055	-126	-12%
Life Skills	279	282	-3	-1%	258	21	8%	842	747	95	13%
MCS	8	16	-8	-50%	25	-17	-68%	39	46	-7	-15%
Moral Reconciliation Therapy	270	292	-22	-8%	286	-16	-6%	828	908	-80	-9%
HIV	28	0	28	0%	38	-10	-26%	28	38	-10	-26%
Real Talk	612	521	91	17%	382	230	60%	1521	1147	374	33%
Inside Out Dad	32	32	0	0%	59	-27	-46%	96	164	-68	-41%
Creative Writing	69	62	7	11%	0	69	0%	187	0	187	0%
Domestic Violence Awareness	116	108	8	7%	0	116	0%	224	0	224	0%
Sessions	58	56	2	4%	46	12	26%	163	140	23	16%
Alcohol & Drugs	2	2	0	0%	2	0	0%	6	6	0	0%
Anger Management	9	8	1	13%	9	0	0%	25	35	-10	-29%
Life Skills	8	8	0	0%	7	1	14%	24	20	4	20%
MCS	2	3	-1	-33%	4	-2	-50%	9	8	1	13%
Moral Reconciliation Therapy	8	8	0	0%	8	0	0%	24	25	-1	-4%
HIV	1	0	1	0%	1	0	0%	1	1	0	0%
Real Talk	16	16	0	0%	10	6	60%	43	30	13	43%
Inside Out Dad	4	4	0	0%	4	0	0%	12	12	0	0%
Creative Writing	4	4	0	0%	0	4	0%	12	0	12	0%
Domestic Violence Awareness	4	3	1	33%	0	4	0%	7	0	7	0%

Religious Services	This Month to Last Month				Same Month Last Year			Year to Date (Last Year/This Year)			
	Mar-12	Feb-12	(+/-)	% Chng	Mar-11	(+/-)	% Chng	2012	2011	(+/-)	% Chng
Total Worship Participants	751	1049	-298	-28%	701	50	7%	2827	2211	616	28%
Chaplain Worship	483	616	-133	-22%	507	-24	-5%	1681	1535	146	10%
Volunteer (Christian, Muslim) Worship	268	433	-165	-38%	194	74	38%	1146	676	470	70%
Total Worship Sessions	29	35	-6	-17%	20	9	45%	100	69	31	45%
Chaplain Worship	13	16	-3	-19%	10	3	30%	44	38	6	16%
Volunteer (Christian, Muslim) Worship	16	19	-3	-16%	10	6	60%	56	31	25	81%

Green: decrease Red: increase

Counting incident numbers not offenses.

Creative Writing started Oct 11

Domestic Violence Awareness started Feb 12

Poplar Place Extended

March-12



Incidents	This Month to Last Month				Same Month Last Year			Year to Date (Last Year/This Year)			
	Mar-12	Feb-12	(+/-)	% Chng	Mar-11	(+/-)	% Chng	2012	2011	(+/-)	% Chng
Annex	30	28	2	7%	47	-17	-36%	108	127	-19	-15%
Assaultive	0	0	0	0%	1	-1	-100%	2	3	-1	-33%
Non- Assaultive	28	28	0	0%	40	-12	-30%	100	111	-11	-10%
Contraband	2	0	2	0%	6	-4	-67%	6	13	-7	-54%
Annex Kitchen	0	0	0	0%	0	0	0%	0	0	0	0%
Assaultive	0	0	0	0%	0	0	0%	0	0	0	0%
Non- Assaultive	0	0	0	0%	0	0	0%	0	0	0	0%
Contraband	0	0	0	0%	0	0	0%	0	0	0	0%

Programs	This Month to Last Month				Same Month Last Year			Year to Date (Last Year/This Year)			
	Mar-12	Feb-12	(+/-)	% Chng	Mar-11	(+/-)	% Chng	2012	2011	(+/-)	% Chng
Participants	1991	1739	252	14%	1854	137	7%	4992	5381	-389	-7%
Alcohol & Drugs	312	96	216	225%	87	225	259%	504	263	241	92%
Anger Management	116	123	-7	-6%	163	-47	-29%	345	481	-136	-28%
Life Skills	212	233	-21	-9%	227	-15	-7%	657	674	-17	-3%
MCS	34	16	18	113%	17	17	100%	68	34	34	100%
Moral Reconciliation Therapy	488	465	23	5%	400	88	22%	1298	1193	105	9%
HIV	0	41	-41	-100%	47	-47	-100%	41	47	-6	-13%
Real Talk	611	622	-11	-2%	887	-276	-31%	1692	2629	-937	-36%
Pre GED	34	2	32	1600%	26	8	31%	42	60	-18	-30%
Inside Out Dad	19	21	-2	-10%	0	19	0%	60	0	60	0%
Domestic Violence Awareness	165	120	45	38%	0	165	0%	285	0	285	0%
Sessions	61	57	4	7%	59	2	3%	168	174	-6	-3%
Alcohol & Drugs	6	2	4	200%	2	4	200%	10	6	4	67%
Anger Management	4	4	0	0%	4	0	0%	12	12	0	0%
Life Skills	8	8	0	0%	8	0	0%	24	24	0	0%
MCS	4	4	0	0%	1	3	300%	13	7	6	86%
Moral Reconciliation Therapy	16	16	0	0%	16	0	0%	46	48	-2	-4%
HIV	0	1	-1	-100%	1	-1	-100%	1	1	0	0%
Real Talk	14	14	0	0%	23	-9	-39%	38	69	-31	-45%
Pre GED	2	1	1	100%	4	-2	-50%	6	7	-1	-14%
Inside Out Dad	4	4	0	0%	0	4	0%	12	0	12	0%
Domestic Violence Awareness	3	3	0	0%	0	3	0%	6	0	6	0%

Religious Services	This Month to Last Month				Same Month Last Year			Year to Date (Last Year/This Year)			
	Mar-12	Feb-12	(+/-)	% Chng	Mar-11	(+/-)	% Chng	2012	2011	(+/-)	% Chng
Total Worship Participants	768	711	57	8%	758	10	1%	2234	2352	-118	-5%
Chaplain Worship	318	216	102	47%	357	-39	-11%	836	1175	-339	-29%
Volunteer (Christian, Muslim) Worship	450	495	-45	-9%	401	49	12%	1398	1177	221	19%
Total Worship Sessions	36	29	7	24%	30	6	20%	98	83	15	18%
Chaplain Worship	13	9	4	44%	14	-1	-7%	33	41	-8	-20%
Volunteer (Christian, Muslim) Worship	23	20	3	15%	16	7	44%	65	42	23	55%

Green: decrease Red: increase

* Counting incident numbers not offenses.

Inside Out Dad started Oct 11

Domestic Violence Awareness started Feb 12

Team New Chicago

March-12



Incidents	This Month to Last Month				Same Month Last Year			Year to Date (Last Year/This Year)			
	Mar-12	Feb-12	(+/-)	% Chng	Mar-11	(+/-)	% Chng	2012	2011	(+/-)	% Chng
2nd Floor	55	60	-5	-8%	56	-1	-2%	158	138	20	14%
Assaultive	3	3	0	0%	7	-4	-57%	14	18	-4	-22%
Non- Assaultive	46	54	-8	-15%	43	3	7%	135	110	25	23%
Contraband	6	3	3	100%	6	0	0%	9	10	-1	-10%

Programs	This Month to Last Month				Same Month Last Year			Year to Date (Last Year/This Year)			
	Mar-12	Feb-12	(+/-)	% Chng	Mar-11	(+/-)	% Chng	2012	2011	(+/-)	% Chng
2nd Floor Participants	240	265	-25	-9%	236	4	2%	763	731	32	4%
Alcohol and Drugs	58	61	-3	-5%	51	7	14%	183	156	27	17%
Anger Management	54	58	-4	-7%	53	1	2%	162	162	0	0%
Life Skills	57	57	0	0%	50	7	14%	166	151	15	10%
MCS	3	3	0	0%	0	3	0%	12	17	-5	-29%
HIV	0	23	-23	-100%	29	-29	-100%	51	82	-31	-38%
Real Talk	54	63	-9	-14%	53	1	2%	175	163	12	7%
2nd Floor Sessions	19	19	0	0%	22	-3	-14%	61	63	-2	-3%
Alcohol and Drugs	4	4	0	0%	7	-3	-43%	13	15	-2	-13%
Anger Management	4	4	0	0%	4	0	0%	12	12	0	0%
Life Skills	4	4	0	0%	4	0	0%	12	12	0	0%
MCS	2	2	0	0%	0	2	0%	8	5	3	60%
HIV	0	1	-1	-100%	2	-2	-100%	3	6	-3	-50%
Real Talk	4	4	0	0%	5	-1	-20%	12	13	-1	-8%

Religious Services	This Month to Last Month				Same Month Last Year			Year to Date (Last Year/This Year)			
	Mar-12	Feb-12	(+/-)	% Chng	Mar-11	(+/-)	% Chng	2012	2011	(+/-)	% Chng
Total Worship Participants	145	294	-149	-51%	229	-84	-37%	761	809	-48	-6%
Chaplain Worship	62	147	-85	-58%	177	-115	-65%	409	512	-103	-20%
Volunteer (Christian, Muslim) Worship	83	147	-64	-44%	52	31	60%	352	297	55	19%
Total Worship Sessions	9	11	-2	-18%	6	3	50%	33	22	11	50%
Chaplain Worship	3	4	-1	-25%	4	-1	-25%	12	12	0	0%
Volunteer (Christian, Muslim) Worship	6	7	-1	-14%	2	4	200%	21	10	11	110%

Green: decrease Red: increase

Counting incident numbers not offenses.

* Let's Get Started began Jun 11

Mental Health

March-12



Programs	This Month to Last Month				Same Month Last Year			Year to Date (Last Year/This Year)			
	Mar-12	Feb-12	(+/-)	% Chng	Mar-11	(+/-)	% Chng	2012	2011	(+/-)	% Chng
2nd Floor Mental Health Participants	1721	1816	-95	-5%	1627	94	6%	5141	4980	161	3%
Alcohol and Drugs	115	139	-24	-17%	82	33	40%	393	261	132	51%
Alcoholics Anonymous	87	90	-3	-3%	114	-27	-24%	265	338	-73	-22%
Real Talk	196	193	3	2%	175	21	12%	567	548	19	3%
Group Therapy	125	122	3	2%	171	-46	-27%	363	509	-146	-29%
Life Skills	214	221	-7	-3%	189	25	13%	633	561	72	13%
HIV	0	0	0	0%	0	0	0%	0	59	-59	-100%
Book Club	133	133	0	0%	149	-16	-11%	372	444	-72	-16%
Goals Group	136	139	-3	-2%	143	-7	-5%	366	438	-72	-16%
MRT	20	33	-13	-39%	29	-9	-31%	85	102	-17	-17%
Anger Management	140	148	-8	-5%	147	-7	-5%	382	449	-67	-15%
Domestic Violence Awareness	121	119	2	2%	189	-68	-36%	347	567	-220	-39%
Men Issue (Parenting)	83	110	-27	-25%	148	-65	-44%	281	436	-155	-36%
Story Telling	88	108	-20	-19%	91	-3	-3%	301	268	33	12%
Let's Get Started	263	261	2	1%	0	263	0%	786	0	786	0%
2nd Floor Mental Health Sessions	105	108	-3	-3%	92	13	14%	309	279	30	11%
Alcohol and Drugs	6	8	-2	-25%	5	1	20%	22	15	7	47%
Alcoholics Anonymous	6	5	1	20%	6	0	0%	16	18	-2	-11%
Real Talk	12	12	0	0%	10	2	20%	34	30	4	13%
Group Therapy	7	7	0	0%	9	-2	-22%	21	27	-6	-22%
Life Skills	12	12	0	0%	10	2	20%	36	30	6	20%
HIV	0	0	0	0%	0	0	0%	0	2	-2	-100%
Book Club	8	8	0	0%	8	0	0%	22	24	-2	-8%
Goals Group	8	8	0	0%	8	0	0%	22	24	-2	-8%
MRT	4	5	-1	-20%	5	-1	-20%	13	16	-3	-19%
Anger Management	8	8	0	0%	8	0	0%	22	24	-2	-8%
Domestic Violence Awareness	7	7	0	0%	10	-3	-30%	20	30	-10	-33%
Men Issue (Parenting)	6	6	0	0%	8	-2	-25%	17	24	-7	-29%
Story Telling	5	6	-1	-17%	5	0	0%	17	15	2	13%
Let's Get Started	16	16	0	0%	0	16	0%	47	0	47	0%

Green: decrease Red: increase

* Let's Get Started began Jun 11

Stone Bay

March-12

Incidents	This Month to Last Month				Same Month Last Year			Year to Date (Last Year/This Year)			
	Mar-12	Feb-12	(+/-)	% Chng	Mar-11	(+/-)	% Chng	2012	2011	(+/-)	% Chng
1st Floor	32	44	-12	-27%	19	13	68%	100	65	35	54%
Assaultive	2	3	-1	-33%	2	0	0%	7	7	0	0%
Non- Assaultive	28	39	-11	-28%	16	12	75%	86	55	31	56%
Contraband	2	2	0	0%	1	1	100%	7	3	4	133%
2nd Floor JM Housing	0	0	0	0%	1	-1	-100%	0	1	-1	-100%
Assaultive	0	0	0	0%	0	0	0%	0	0	0	0%
Non- Assaultive	0	0	0	0%	0	0	0%	0	0	0	0%
Contraband	0	0	0	0%	1	-1	-100%	0	1	-1	-100%

Processing

March-12

Incidents	This Month to Last Month				Same Month Last Year			Year to Date (Last Year/This Year)			
	Mar-12	Feb-12	(+/-)	% Chng	Mar-11	(+/-)	% Chng	2012	2011	(+/-)	% Chng
Lower Level North/Intake	5	7	-2	-29%	0	5	0%	19	0	19	0%
Assaultive	1	1	0	0%	0	1	0%	2	0	2	0%
Non- Assaultive	2	3	-1	-33%	0	2	0%	10	0	10	0%
Contraband	2	3	-1	-33%	0	2	0%	7	0	7	0%

Lower Level South/Tunnel

March-12

Incidents	This Month to Last Month				Same Month Last Year			Year to Date (Last Year/This Year)			
	Mar-12	Feb-12	(+/-)	% Chng	Mar-11	(+/-)	% Chng	2012	2011	(+/-)	% Chng
Lower Level South/Tunnel	9	10	-1	-10%	0	9	0%	30	0	30	0%
Assaultive	3	3	0	0%	0	3	0%	9	0	9	0%
Non- Assaultive	4	7	-3	-43%	0	4	0%	14	0	14	0%
Contraband	2	0	2	0%	0	2	0%	7	0	7	0%

* combined North with Intake and South with Tunnel per Lt. Barnett Jan 12



Jail DRT Report

March-12



Jail DRT	This Month to Last Month				Same Month Last Year			Year to Date (Last Year/This Year)			
	Mar-12	Feb-12	(+/-)	% Chng	Mar-11	(+/-)	% Chng	2012	2011	(+/-)	% Chng
Callouts	6	5	1	20%	1	5	500%	18	6	12	200%
7 - 3 Shift	4	0	4	0%	0	4	0%	6	4	2	50%
3 - 11 Shift	2	4	-2	-50%	1	1	100%	10	2	8	400%
11- 7 Shift	0	1	-1	-100%	0	0	0%	2	0	2	0%
Referrals / Escorts	5868	3861	2007	52%	3721	2147	58%	14134	10264	3870	38%
7 - 3 Shift	1267	1484	-217	-15%	1431	-164	-11%	4584	5218	-634	-12%
3 - 11 Shift	3680	1906	1774	93%	2191	1489	68%	7910	4796	3114	65%
11- 7 Shift	753	471	282	60%	99	654	661%	1472	250	1222	489%
Shakedown Team	168	0	168	0%	0	168	0%	168	0	168	0%
SCCC Escorts	931	877	54	6%	572	359	63%	2529	1648	881	53%
Areas Patrolled	1033	1088	-55	-5%	943	90	10%	3387	2873	514	18%
7 - 3 Shift	231	317	-86	-27%	278	-47	-17%	950	901	49	5%
3 - 11 Shift	415	397	18	5%	347	68	20%	1313	1011	302	30%
11- 7 Shift	387	374	13	3%	318	69	22%	1124	961	163	17%
DRT Shakedowns	19064	20165	-1101	-5%	13388	5676	42%	65518	43038	22480	52%
Clothed Body Search	12748	13090	-342	-3%	8677	4071	47%	42919	27716	15203	55%
Random (Cell Searches)	6023	6710	-687	-10%	4447	1576	35%	21513	14566	6947	48%
Random (Entire Pod)	269	341	-72	-21%	248	21	8%	1018	708	310	44%
Scheduled (Entire Pod)	24	24	0	0%	16	8	50%	68	48	20	42%
Grievances	1	3	-2	-67%	2	-1	-50%	9	4	5	125%
Codes (Red,White,Blue) Response	312	302	10	3%	283	29	10%	931	822	109	13%
Non-Arrest Civilians	10	7	3	43%	15	-5	-33%	33	95	-62	-65%

*Non-Arrest Civilians added March 2011

* Shakedown Team started Mar12

Jail Transportation Stats	This Month to Last Month				Same Month Last Year			Year to Date (Last Year/This Year)			
	Mar-12	Feb-12	(+/-)	% Chng	Mar-11	(+/-)	% Chng	2012	2011	(+/-)	% Chng
Total Transportation Trips	484	452	32	7%	563	-79	-14%	1,441	1,514	-73	-5%
Within County Trips	472	435	37	9%	551	-79	-14%	1,394	1,448	-54	-4%
Out of County Trips	12	17	-5	-29%	12	0	0%	47	66	-19	-29%

Green: decrease Red: increase

BPSI - Criminal Investigative Unit Report

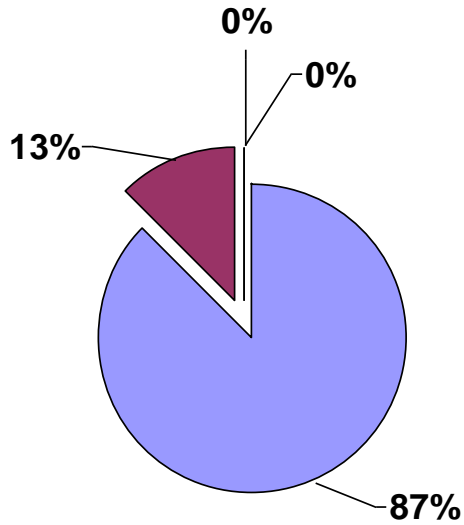
March-12

CIU Stats	This Month to Last Month				Same Month Last Year			Year to Date (Last Year/This Year)			
	Mar-12	Feb-12	(+/-)	% Chng	Mar-11	(+/-)	% Chng	2012	2011	(+/-)	% Chng
New Cases Opened	22	30	-8	-27%	25	-3	-12%	72	72	0	0%
Total Incidents Reviewed	93	88	5	6%	82	11	13%	242	276	-34	-12%
Cases Disposed	24	28	-4	-14%	21	3	14%	70	64	6	9%
Unfounded	4	1	3	300%	0	4	0%	8	5	3	60%
Referred for Administrative Investigation	1	0	1	0%	0	1	0%	3	1	2	200%
Referred GIB	3	1	2	200%	3	0	0%	4	7	-3	-43%
Referred GIU	0	0	0	0%	0	0	0%	0	0	0	0%
Cases Reviewed by DAG/JC	16	26	-10	-38%	18	-2	-11%	55	51	4	8%
Cleared by Arrest	14	19	-5	-26%	14	0	0%	39	45	-6	-13%
Warrant Issued	2	7	-5	-71%	3	-1	-33%	16	5	11	220%
Denied by Judicial Commissioner	0	0	0	0%	1	-1	-100%	0	1	-1	-100%
Denied by DAG	0	0	0	0%	0	0	0%	0	0	0	0%
Disposition	14	21	-7	-33%	14	0	0%	42	45	-3	-7%
Active	6	17	-11	-65%	10	-4	-40%	27	22	5	23%
Nolle Prosequi	5	4	1	25%	1	4	400%	12	17	-5	-29%
Convicted	3	0	3	0%	3	0	0%	3	6	-3	-50%
Indecent Exposure	8	12	-4	-33%	4	4	100%	25	22	3	14%
Active	3	9	-6	-67%	2	1	50%	14	5	9	180%
Nolle Prosequi	4	3	1	33%	1	3	300%	8	14	-6	-43%
Convicted	1	0	1	0%	1	0	0%	3	3	0	0%

Green: decrease Red: increase

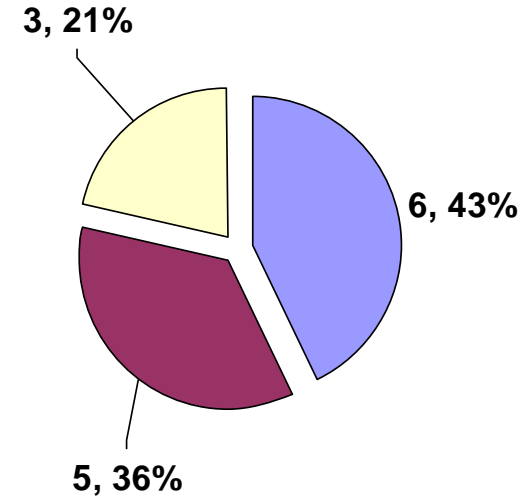
Cases Reviewed by DAG/JC

- Cleared by Arrest
- Warrant Issued
- Denied by Judicial Commissioner
- Denied by DAG



Disposition

- Active
- Nolle Prosequi
- Convicted



M. Johnson	#11131262
R. Clark	#12107011
L. Tolliver	#11134094

Ind Exp	3 days
PCS	20 days
Inm Aslt	15 days

Jail Gang Report

March-12

Jail Gang Stats	This Month to Last Month				Same Month Last Year			Year to Date (Last Year/This Year)			
	Mar-12	Feb-12	(+/-)	% Chng	Mar-11	(+/-)	% Chng	2012	2011	(+/-)	% Chng
Gang Related Incidents	4	2	2	100%	2	2	100%	9	7	2	29%
201 Poplar	4	0	4	0%	2	2	100%	7	6	1	17%
Jail East	0	2	-2	-100%	0	0	0%	2	1	1	100%
Total Incidents Reviewed	206	200	6	3%	215	-9	-4%	606	623	-17	-3%
Total Violent Incidents Reviewed	53	47	6	13%	52	1	2%	155	165	-10	-6%
Assault to Staff	5	2	3	150%	4	1	25%	11	12	-1	-8%
Spit/Urine/Feces/Staff	4	5	-1	-20%	8	-4	-50%	14	20	-6	-30%
Threat to Staff by Inmate	27	20	7	35%	20	7	35%	65	61	4	7%
Inmate Assault	17	20	-3	-15%	20	-3	-15%	65	72	-7	-10%
Total Gang Validations	58	55	3	5%	86	-28	-33%	172	237	-65	-27%
Intake Validated	44	37	7	19%	70	-26	-37%	122	164	-42	-26%
Facility Validated	14	18	-4	-22%	16	-2	-13%	50	73	-23	-32%
Field Validated	0	0	0	0%	0	0	0%	0	0	0	0%
Total Updated (Validation) Files	156	168	-12	-7%	353	-197	-56%	525	951	-426	-45%
Intake Validated	135	144	-9	-6%	324	-189	-58%	437	827	-390	-47%
Facility Validated	21	24	-3	-13%	29	-8	-28%	88	124	-36	-29%
Field Validated	0	0	0	0%	0	0	0%	0	0	0	0%
Total Interviewed in Intake	1447	1614	-167	-10%	2155	-708	-33%	4820	5837	-1017	-17%
Total Interviewed in Facility	550	695	-145	-21%	820	-270	-33%	2121	2537	-416	-16%
Weekly Avg. Known Gang Members	495	497	-2	0%	546	-51	-9%	383	569	-186	-33%
Gangster Disciple	138	145	-7	-5%	159	-21	-13%	146	163	-17	-10%
Vice Lords	121	125	-4	-3%	135	-14	-10%	126	139	-13	-9%
Crips	130	126	4	3%	126	4	3%	134	134	0	0%
Others	99	92	7	8%	112	-13	-12%	96	119	-23	-20%
Latino	7	9	-2	-22%	14	-7	-50%	9	14	-5	-35%
Court Arrests	582	518	64	12%	906	-324	-36%	1678	2067	-389	-19%
Associates (Insufficient points for validation)	62	59	3	5%	65	-3	-5%	62	68	-6	-9%
Adult Gang Members CJC	479	484	-5	-1%	509	-30	-6%	1491	1594	-103	-6%
Juvenile Gang Members CJC	0	0	0	0%	8	-8	-100%	0	28	-28	-100%
Total Gang Members CJC	479	484	-5	-1%	517	-38	-7%	1491	1622	-131	-8%
Juvenile Gang Members JE	10	9	1	11%	19	-9	-47%	29	53	-24	-45%
Female Gang Members JE	6	4	2	50%	10	-4	-40%	13	32	-19	-59%
Total Gang Members JE	16	13	3	23%	29	-13	-45%	42	85	-43	-51%
Total Gang Members	495	497	-2	0%	546	-51	-9%	1533	1707	-174	-10%
Total Gang Members Released	590	533	57	11%	594	-4	-1%	1646	1496	150	10%

Green: decrease Red: increase

Jail Inmate Disciplinary Data

March-12

Jail Disciplinary Stats	This Month to Last Month				Same Month Last Year			Year to Date (Last Year/This Year)			
	Mar-12	Feb-12	(+/-)	% Chng	Mar-11	(+/-)	% Chng	2012	2011	(+/-)	% Chng
Disciplinary Hearings Scheduled	220	215	5	2%	226	-6	-3%	628	726	-98	-13%
Disciplinary Outcomes	132	111	21	19%	156	-24	-15%	356	505	-149	-30%
Sentenced Detention	105	88	17	19%	114	-9	-8%	280	395	-115	-29%
Probation	27	15	12	80%	36	-9	-25%	64	83	-19	-23%
Not Guilty	0	2	-2	-100%	0	0	0%	4	3	1	33%
Disciplinary Sanctions	0	6	-6	-100%	6	-6	-100%	8	24	-16	-67%
Dismissals	88	104	-16	-15%	70	18	26%	272	221	51	23%
Due to Procedural Violations	45	37	8	22%	21	24	114%	114	88	26	30%
Victims	7	7	0	0%	18	-11	-61%	31	43	-12	-28%
Released	23	26	-3	-12%	15	8	53%	69	44	25	57%
Medical	0	0	0	0%	1	-1	-100%	1	1	0	0%
Refer Backs	13	34	-21	-62%	15	-2	-13%	57	45	12	27%
Sanction by Floors	516	473	43	9%	521	-5	-1%	1594	1529	65	4%
6th Floor	25	24	1	4%	41	-16	-39%	100	108	-8	-7%
5th Floor	32	36	-4	-11%	30	2	7%	93	86	7	8%
4th Floor	173	162	11	7%	202	-29	-14%	574	639	-65	-10%
3rd Floor	195	158	37	23%	145	50	34%	528	447	81	18%
2nd Floor	40	46	-6	-13%	37	3	8%	117	89	28	31%
1st Floor	14	15	-1	-7%	11	3	27%	47	18	29	161%
Lower Level	6	3	3	100%	8	-2	-25%	15	18	-3	-17%
Annex	31	29	2	7%	47	-16	-34%	120	124	-4	-3%

Green: decrease Red: increase

Jail Grievance Report

March-12

Jail Grievances	This Month to Last Month				Same Month Last Year			Year to Date (Last Year/This Year)			
	Mar-12	Feb-12	(+/-)	% Chng	Mar-11	(+/-)	% Chng	2012	2011	(+/-)	% Chng
Total Grievances Received	552	465	87	19%	422	130	31%	1490	1168	322	28%
1st Floor Admin Seg	57	48	9	19%	31	26	84%	151	92	59	64%
2nd Floor	76	53	23	43%	88	-12	-14%	208	231	-23	-10%
3rd Floor	114	105	9	9%	89	25	28%	302	224	78	35%
4th Floor	120	133	-13	-10%	112	8	7%	389	314	75	24%
5th Floor	37	44	-7	-16%	19	18	95%	101	73	28	38%
6th Floor	21	18	3	17%	12	9	75%	63	39	24	62%
Annex	44	22	22	100%	25	19	76%	104	79	25	32%
Lower Level	3	0	3	0%	1	2	200%	4	5	-1	-20%
Jail East	78	38	40	105%	44	34	77%	155	110	45	41%
Juveniles	2	4	-2	-50%	1	1	100%	13	1	12	1200%
Total Non Valid Grievances Received	187	182	5	3%	175	12	7%	578	498	80	16%
Total Valid Grievances Received	365	283	82	29%	247	118	48%	912	670	242	36%
201 Poplar	322	263	59	22%	223	99	44%	820	606	214	35%
Staff Actions	180	139	41	29%	95	85	89%	438	278	160	58%
Medical	80	60	20	33%	62	18	29%	190	170	20	12%
Food Services	13	16	-3	-19%	13	0	0%	38	39	-1	-3%
Programs	20	13	7	54%	14	6	43%	52	38	14	37%
Maintenance	1	1	0	0%	1	0	0%	4	1	3	300%
Laundry	8	10	-2	-20%	16	-8	-50%	24	34	-10	-29%
Religious	2	2	0	0%	5	-3	-60%	5	5	0	0%
Commissary	6	7	-1	-14%	3	3	100%	19	6	13	217%
Aramark	9	8	1	13%	6	3	50%	34	19	15	79%
Hygiene	0	3	-3	-100%	1	-1	-100%	3	1	2	200%
Support Svc Heating/Cooling/Ventilation	1	0	1	0%	1	0	0%	2	5	-3	-60%
Telecommunication	2	4	-2	-50%	6	-4	-67%	11	10	1	10%
Jail East	43	20	23	115%	24	19	79%	92	64	28	44%
Staff Actions	19	8	11	138%	8	11	138%	34	21	13	62%
Medical	5	7	-2	-29%	5	0	0%	19	9	10	111%
Food Services	4	0	4	0%	1	3	300%	6	1	5	500%
Programs	1	0	1	0%	0	1	0%	3	3	0	0%
Maintenance	0	0	0	0%	0	0	0%	0	1	-1	-100%
Laundry	1	3	-2	-67%	0	1	0%	5	0	5	0%
Religious	0	0	0	0%	0	0	0%	0	0	0	0%
Commissary	0	0	0	0%	0	0	0%	0	0	0	0%
Aramark	11	1	10	1000%	3	8	267%	19	8	11	138%
Hygiene	1	0	1	0%	0	1	0%	0	0	0	0%
Support Svc Heating/Cooling/Ventilation	0	0	0	0%	6	-6	-100%	3	20	-17	-85%
Telecommunication	1	1	0	0%	1	0	0%	2	1	1	100%
Open/Unresolved Grievances Over 10 Days	20	1	19	1900%	0	20	0%	22	3	19	633%
Number of Inm Filed Grievances	363	314	49	16%	295	68	23%	1001	804	197	25%
Percentage Inm Filed Grievances	15%	13%	2%	17%	12%	3%	29%	13%	11%	3%	26%

Green: decrease Red: increase

Programs grievances include legal room scheduling, television scheduling, recreations scheduling and counselors.

Jail East

March-12

Incidents	This Month to Last Month				Same Month Last Year			Year to Date (Last Year/This Year)			
	Mar-12	Feb-12	(+/-)	% Chng	Mar-11	(+/-)	% Chng	2012	2011	(+/-)	% Chng
Jail East	47	51	-4	-8%	36	11	31%	134	97	37	38%
Assaultive	4	3	1	33%	1	3	300%	10	6	4	67%
Non- Assaultive	42	48	-6	-13%	33	9	27%	122	84	38	45%
Contraband	1	0	1	0%	2	-1	-50%	2	7	-5	-71%
Jail East Male Juveniles	15	5	10	200%	12	3	25%	25	26	-1	-4%
Assaultive	2	1	1	100%	0	2	0%	3	4	-1	-25%
Non- Assaultive	13	4	9	225%	12	1	8%	22	22	0	0%
Contraband	0	0	0	0%	0	0	0%	0	0	0	0%

Jail East Contraband	This Month to Last Month				Same Month Last Year			Year to Date (Last Year/This Year)			
	Mar-12	Feb-12	(+/-)	% Chng	Mar-11	(+/-)	% Chng	2012	2011	(+/-)	% Chng
Jail East	4	1	3	300%	3	1	33%	7	12	-5	-42%
Tobacco	0	0	0	0%	1	-1	-100%	1	1	0	0%
Marijuana	1	1	0	0%	1	0	0%	2	1	1	100%
Crack/Cocaine	0	0	0	0%	0	0	0%	0	0	0	0%
Prescribed Meds	0	0	0	0%	0	0	0%	1	1	0	0%
Weapons	0	0	0	0%	0	0	0%	0	0	0	0%
Money	3	0	3	0%	0	3	0%	3	3	0	0%
Other	0	0	0	0%	1	-1	-100%	0	6	-6	-100%

Jail East Sec Ops Stats	This Month to Last Month				Same Month Last Year			Year to Date (Last Year/This Year)			
	Mar-12	Feb-12	(+/-)	% Chng	Mar-11	(+/-)	% Chng	2012	2011	(+/-)	% Chng
total 30 day Entire Area Shakedowns	169	115	54	47%	63	106	168%	437	204	233	114%
Scheduled Shakedowns	84	84	0	0%	38	46	121%	252	124	128	103%
(Repeat) Scheduled & Unscheduled Shkdw	85	31	54	174%	25	60	240%	185	80	105	131%
Use of Force	7	2	5	250%	3	4	133%	11	12	-1	-8%
Planned	0	0	0	0%	1	-1	-100%	0	2	-2	-100%
Unplanned	7	2	5	250%	2	5	250%	11	10	1	10%
Chemical	5	2	3	150%	2	3	150%	9	10	-1	-10%
Restraint Chair (Security)	0	0	0	0%	0	0	0%	0	0	0	0%
4 Point Bed Restraints (Medical)	0	0	0	0%	0	0	0%	0	0	0	0%
Fire Drills	8	6	2	33%	6	2	33%	20	19	1	5%
Fire Drill Deficiencies	0	0	0	0%	0	0	0%	0	0	0	0%
Medical Drill	3	2	1	50%	0	3	0%	8	0	8	0%
Medical Drill Deficiencies	0	0	0	0%	0	0	0%	0	0	0	0%

Green: decrease Red: increase

* Medical drills added Jan 12

Jail East Women Programs

March-12

Programs	This Month to Last Month				Same Month Last Year			Year to Date (Last Year/This Year)			
	Mar-12	Feb-12	(+/-)	% Chng	Mar-11	(+/-)	% Chng	2012	2011	(+/-)	% Chng
Participants	2325	1407	918	65%	2498	-173	-7%	6085	7572	-1487	-20%
Alcohol Anonymous	84	78	6	8%	70	14	20%	236	166	70	42%
Moral Reconation Therapy	63	42	21	50%	49	14	29%	161	111	50	45%
Storybook	16	21	-5	-24%	16	0	0%	62	42	20	48%
Commitment to Change	333	323	10	3%	339	-6	-2%	991	1067	-76	-7%
Literacy	0	0	0	0%	97	-97	-100%	73	176	-103	-59%
Job Readiness	0	0	0	0%	56	-56	-100%	66	178	-112	-63%
Addictive Behaviors	0	0	0	0%	69	-69	-100%	139	159	-20	-13%
Creative Awareness	0	0	0	0%	170	-170	-100%	41	584	-543	-93%
Fitness/Aerobic	670	346	324	94%	209	461	221%	1270	905	365	40%
Parenting	19	0	19	0%	53	-34	-64%	70	106	-36	-34%
HIV Awareness	47	39	8	21%	77	-30	-39%	134	265	-131	-49%
Hygiene	0	0	0	0%	90	-90	-100%	64	225	-161	-72%
CAAP	56	42	14	33%	28	28	100%	136	77	59	77%
Anger Management	144	108	36	33%	76	68	89%	329	205	124	60%
Alcohol & Drug	52	67	-15	-22%	35	17	49%	187	121	66	55%
Real Talk	169	91	78	86%	177	-8	-5%	364	441	-77	-17%
MCS	1	1	0	0%	0	1	0%	3	0	3	0%
Re-Entry	192	124	68	55%	364	-172	-47%	476	1053	-577	-55%
Re-Entry Group	54	47	7	15%	0	54	0%	148	0	148	0%
Sister to Sister	45	0	45	0%	74	-29	-39%	92	317	-225	-71%
Journalism	65	78	-13	-17%	124	-59	-48%	307	523	-216	-41%
Healing Beyond Trauma	39	0	39	0%	85	-46	-54%	217	273	-56	-21%
Pre GED Math / Reading	0	0	0	0%	190	-190	-100%	75	494	-419	-85%
Crutches	140	0	140	0%	0	140	0%	140	0	140	0%
What Would You Do	136	0	136	0%	0	136	0%	136	0	136	0%

Religious Services	This Month to Last Month				Same Month Last Year			Year to Date (Last Year/This Year)			
	Mar-12	Feb-12	(+/-)	% Chng	Mar-11	(+/-)	% Chng	2012	2011	(+/-)	% Chng
Total Worship Participants	805	528	277	52%	662	143	22%	2256	2009	247	12%
Chaplain Worship	207	59	148	251%	0	207	0%	301	0	301	0%
Volunteer (Christian, Muslim) Worship	598	469	129	28%	662	-64	-10%	1955	2009	-54	-3%
Total Worship Sessions	36	24	12	50%	40	-4	-10%	108	119	-11	-9%
Chaplain Worship	4	3	1	33%	0	4	0%	8	0	8	0%
Volunteer (Christian, Muslim) Worship	32	21	11	52%	40	-8	-20%	100	119	-19	-16%

Green: decrease Red: increase

* Crutches & What Would You Do started Feb12

Sessions continued on next page

Jail East Women Programs (cont.)

March-12

Sessions	This Month to Last Month				Same Month Last Year			Year to Date (Last Year/This Year)			
	Mar-12	Feb-12	(+/-)	% Chng	Mar-11	(+/-)	% Chng	2012	2011	(+/-)	% Chng
Total Sessions	266	172	94	55%	449	-183	-41%	745	1299	-554	-43%
Alcohol Anonymous	8	8	0	0%	8	0	0%	22	18	4	22%
Moral Reconation Therapy	4	3	1	33%	3	1	33%	10	9	1	11%
Storybook	3	3	0	0%	2	1	50%	9	7	2	29%
Commitment to Change	8	8	0	0%	7	1	14%	24	23	1	4%
Literacy	0	0	0	0%	5	-5	-100%	73	8	65	813%
Job Readiness	0	0	0	0%	3	-3	-100%	2	7	-5	-71%
Addictive Behaviors	0	0	0	0%	3	-3	-100%	4	7	-3	-43%
Creative Awareness	0	0	0	0%	3	-3	-100%	1	10	-9	-90%
Fitness/Aerobic	13	11	2	18%	11	2	18%	33	44	-11	-25%
Parenting	1	0	1	0%	2	-1	-50%	3	5	-2	-40%
HIV Awareness	3	1	2	200%	2	1	50%	6	8	-2	-25%
Hygiene	0	0	0	0%	4	-4	-100%	2	9	-7	-78%
CAAP	2	1	1	100%	2	0	0%	5	6	-1	-17%
Anger Management	4	3	1	33%	3	1	33%	11	9	2	22%
Alcohol & Drug	4	2	2	100%	3	1	33%	8	9	-1	-11%
Real Talk	4	3	1	33%	4	0	0%	10	13	-3	-23%
MCS	2	3	-1	-33%	0	2	0%	8	0	8	0%
Re-Entry	192	124	68	55%	364	-172	-47%	476	1053	-577	-55%
Re-Entry Group	1	1	0	0%	0	1	0%	3	0	3	0%
Sister to Sister	3	0	3	0%	3	0	0%	4	11	-7	-64%
Journalism	3	1	2	200%	3	0	0%	8	15	-7	-47%
Healing Beyond Trauma	3	0	3	0%	4	-1	-25%	9	10	-1	-10%
Pre GED Math / Reading	0	0	0	0%	8	-8	-100%	2	15	-13	-87%
Crutches	4	0	4	0%	0	4	0%	4	0	4	0%
What Would You Do	4	0	4	0%	0	4	0%	4	0	4	0%

Green: decrease Red: increase

Jail East Disciplinary Data

March-12

Jail East Disciplinary Stats	This Month to Last Month				Same Month Last Year			Year to Date (Last Year/This Year)			
	Mar-12	Feb-12	(+/-)	% Chng	Mar-11	(+/-)	% Chng	2012	2011	(+/-)	% Chng
Disciplinary Hearings Scheduled	29	43	-14	-33%	38	-9	-24%	93	129	-36	-28%
Disciplinary Outcomes	8	14	-6	-43%	18	-10	-56%	36	71	-35	-49%
Sentenced Detention	3	10	-7	-70%	6	-3	-50%	16	26	-10	-38%
Probation	0	2	-2	-100%	3	-3	-100%	3	12	-9	-75%
Not Guilty	1	1	0	0%	7	-6	-86%	7	19	-12	-63%
Disciplinary Sanctions	4	1	3	300%	2	2	100%	10	14	-4	-29%
Dismissals	21	29	-8	-28%	20	1	5%	57	58	-1	-2%
Due to Procedural Violations	4	13	-9	-69%	5	-1	-20%	21	20	1	5%
Victims	3	1	2	200%	4	-1	-25%	4	13	-9	-69%
Released	12	12	0	0%	9	3	33%	25	23	2	9%
Medical	2	3	-1	-33%	2	0	0%	7	2	5	250%
Refer Backs	0	0	0	0%	0	0	0%	0	0	0	0%
Sanction by Floors	42	41	1	2%	30	12	40%	120	77	43	56%

Green: decrease Red: increase

Jail East Male Juveniles

March-12

Programs	This Month to Last Month				Same Month Last Year			Year to Date (Last Year/This Year)			
	Mar-12	Feb-12	(+/-)	% Chng	Mar-11	(+/-)	% Chng	2012	2011	(+/-)	% Chng
Juvenile Participants	780	310	470	152%	308	472	153%	1334	750	584	78%
Anger Management	173	0	173	0%	0	173	0%	173	52	121	233%
Moral Reconciliation Therapy	0	0	0	0%	0	0	0%	0	2	-2	-100%
Pre GED	18	75	-57	-76%	132	-114	-86%	123	311	-188	-60%
MCS	197	32	165	516%	16	181	1131%	274	69	205	297%
Real Talk	68	38	30	79%		68	0%	106	0	106	0%
Class Hope	150	83	67	81%	56	94	168%	290	89	201	226%
Mentoring	80	82	-2	-2%	104	-24	-23%	274	227	47	21%
Physical Fitness	0	0	0	0%	0	0	0%	0	0	0	0%
Juvenile Sessions	39	24	15	63%	36	3	8%	86	105	-19	-18%
Anger Management	4	0	4	0%	0	4	0%	4	6	-2	-33%
Moral Reconciliation Therapy	0	0	0	0%	0	0	0%	0	1	-1	-100%
Pre GED	4	5	-1	-20%	13	-9	-69%	12	38	-26	-68%
MCS	11	6	5	83%	6	5	83%	25	24	1	4%
Real Talk	4	3	1	33%		4	0%	7	0	7	0%
Class Hope	6	4	2	50%	5	1	20%	14	11	3	27%
Mentoring	6	6	0	0%	12	-6	-50%	20	25	-5	-20%
Physical Fitness	0	0	0	0%	0	0	0%	0	0	0	0%

Religious Services	This Month to Last Month				Same Month Last Year			Year to Date (Last Year/This Year)			
	Mar-12	Feb-12	(+/-)	% Chng	Mar-11	(+/-)	% Chng	2012	2011	(+/-)	% Chng
Total Worship Participants	152	72	80	111%	230	-78	-34%	327	602	-275	-46%
Chaplain Worship	20	33	-13	-39%	0	20	0%	64	0	64	0%
Volunteer (Christian, Muslim) Worship	132	39	93	238%	230	-98	-43%	263	602	-339	-56%
Total Worship Sessions	11	11	0	0%	26	-15	-58%	36	61	-25	-41%
Chaplain Worship	1	2	-1	-50%	0	1	0%	6	0	6	0%
Volunteer (Christian, Muslim) Worship	10	9	1	11%	26	-16	-62%	30	61	-31	-51%

Green: decrease Red: increase

Counting incident numbers not offenses.

* Real Talk added Feb12

Jail Medical Report - Jail East

March-12

Jail Medical Stats - JE	This Month to Last Month				Same Month Last Year			Year to Date (Last Year/This Year)			
	Mar-12	Feb-12	(+/-)	% Chng	Mar-11	(+/-)	% Chng	2012	2011	(+/-)	% Chng
Health Assessments	113	121	-8	-7%	116	-3	-3%	357	275	82	30%
Health Assessment Completion Ratio	96%	98%	-2%	-2%	0%	96%	0%	97%	62%	35%	56%
Treatments	198	209	-11	-5%	192	6	3%	516	459	57	12%
Total Sick-Call	603	680	-77	-11%	668	-65	-10%	1878	1579	299	19%
Total Sick-Call Completion Ratio	88%	100%	-12%	-12%	0%	88%	0%	92%	30%	62%	211%
MD Sick-Call	323	292	31	11%	326	-3	-1%	850	819	31	4%
Nurse Sick-Call	280	388	-108	-28%	342	-62	-18%	1028	760	268	35%
Total Visits	1952	1567	385	25%	370	1582	428%	3850	957	2893	302%
Walk-In Visits	1743	1400	343	25%	189	1554	822%	3291	465	2826	608%
Dental Visits	39	34	5	15%	27	12	44%	101	74	27	36%
Psychiatric Visits	170	133	37	28%	154	16	10%	458	418	40	10%
Diabetic Inmates (daily avg)	15	13	2	15%	17	-2	-12%	14	16	-3	-16%
Number of PPDs Given	1013	898	115	13%	1103	-90	-8%	2733	2793	-60	-2%
Number of PPDs Read	229	271	-42	-15%	275	-46	-17%	782	766	16	2%
Number of Positive PPDs	28	12	16	133%	4	24	600%	68	9	59	656%
Inmates on TB Meds	3	2	1	50%	4	-1	-25%	2	4	-1	-36%
Inmates on HIV Meds	6	4	2	50%	5	1	20%	6	4	2	42%
Clinic Appointments	53	34	19	56%	35	18	51%	123	91	32	35%
Total Referrals	5	9	-4	-44%	14	-9	-64%	19	37	-18	-49%
ER Referrals	4	8	-4	-50%	12	-8	-67%	15	35	-20	-57%
Offsite Mental Health Referrals	1	1	0	0%	2	-1	-50%	4	2	2	100%
MRSA	6	18	-12	-67%	5	1	20%	24	7	17	243%
Less than 30 days	2	18	-16	-89%	5	-3	-60%	20	7	13	186%
Greater than 30 days	4	0	4	0%	0	4	0%	4	0	4	0%
MRSA Requiring Isolation	0	0	0	0%	0	0	0%	0	0	0	0%
Total Wounds Cultured	0	0	0	0%	0	0	0%	0	0	0	0%
Total (+) Wound Cultures	0	0	0	0%	0	0	0%	0	0	0	0%

Green: decrease Red: increase

The End



Disclaimer:

This report does not represent or guarantee that the information is accurate, complete or current. Neither the Jail Report Card nor its creator shall be liable for any damages arising out of or in connection with the use of this report.