



Key Indicators Brief

March 2012



March 2012

Information System Projects

March 2012

Bureau	Project	Begin Date	End Date	Project Status
All	SAN UPgrade	11/01/2011	05/31/2012	We have received PO on 4/13/12 for HP Engineer to come onsite to move files to new storage device.
Law Enforcement	TAG Upgrade (Gang Tracking Software)	11/01/2010	05/01/2012	Web Application for easier deployment with modules for Jail, Corrections Center, and Law Enforcement enhancing data sharing efforts with this common system. We have begun testing.
Planning	Grant Software	09/01/2009	05/31/2012	Planning for installation of the 360 Grant Module, waiting on quote from vendor. CRM has been completed.

Information System Projects

March 2012

Bureau	Project	Begin Date	End Date	Project Status
Jail East	Lobby Guard	07/08/2011	05/01/2012	Software installation has been completed. We are in the process of scheduling training date with vendor for JE, training will be one day.
Jail	Jail Cameras Phase 3	12/06/2010	09/30/2012	Waiting for response from Contracts Administration on approval of resolution and maintenance agreement.
All	Sheriff411 Upgrade	01/31/2012	06/01/2012	Currently in the process of updating links and content.



March 2012

MARCH 2012 AFIS REPORT

	This Month to Last Month				Same Month Last Year			Year to Date (Last Year/This Year)			
	Mar-12	Feb-12	(+/-)	% Chng	Mar-11	(+/-)	% Chng	YTD12	YTD11	(+/-)	% Chng
Current 10 Print Database	496820	496104	716	0.1%	483767	13053	2.7%	496820	483767	13053	2.7%
SCSO Latent Searches	29	58	-29	-50.0%	36	-7	-19.4%	154	81	73	90.1%
SCSO Latent Hits	9	9	0	0.0%	5	4	80.0%	34	21	13	61.9%
Total Latents Retained on Database	35650	35358	292	0.8%	30784	4866	15.8%	35650	30784	4866	15.8%

*August 2002 Data not available for year-to-date

Latent FP Requests	This Month to Last Month				Same Month Last Year			Year to Date (Last Year/This Year)			
	Mar-12	Feb-12	(+/-)	%Chng	Mar-11	(+/-)	% Chng	YTD12	YTD11	(+/-)	% Chng
SCSO	10	43	-33	-76.7%	19	-9	-47.4%	93	39	54	138.5%
MPD	2	1	1	100.0%	0	2	0.0%	3	0	3	0.0%
Germantown PD	4	6	-2	-33.3%	6	-2	-33.3%	26	22	4	18.2%
Collierville PD	5	4	1	25.0%	4	1	25.0%	12	4	8	200.0%
Bartlett PD	5	4	1	25.0%	6	-1	-16.7%	14	12	2	16.7%
Tunica SO	0	0	0	0.0%	0	0	0.0%	0	0	0	0.0%
Millington PD	0	0	0	0.0%	0	0	0.0%	0	0	0	0.0%
Other Agency	3	0	3	0.0%	1	2	200.0%	6	4	2	50.0%
Total Requests for Comparison	29	58	-29	-50.0%	36	-7	-19.4%	154	81	73	90.1%

Data not collected prior to July -03

Latent FP Hits	This Month to Last Month				Same Month Last Year			Year to Date (Last Year/This Year)			
	Mar-12	Feb-12	(+/-)	% Chng	Mar-11	(+/-)	% Chng	YTD12	YTD11	(+/-)	% Chng
SCSO	0	5	-5	-100.0%	1	-1	-100.0%	12	9	3	33.3%
MPD	2	1	1	100.0%	0	2	0.0%	3	0	3	0.0%
Germantown PD	1	0	1	0.0%	1	0	0.0%	7	4	3	75.0%
Collierville PD	1	1	0	0.0%	0	1	0.0%	2	0	2	0.0%
Bartlett PD	2	2	0	0.0%	3	-1	-33.3%	5	8	-3	-37.5%
Tunica SO	0	0	0	0.0%	0	0	0.0%	0	0	0	0.0%
Southaven PD	0	0	0	0.0%	0	0	0.0%	0	0	0	0.0%
Other Agency	3	0	3	0.0%	0	3	0.0%	5	0	5	0.0%
Total Hits	9	9	0	0.0%	5	4	80.0%	34	21	13	61.9%
% of Hits to Requests	31%	15%	16%	106.7%	14%	17%	121.4%	22%	25%	-3%	-12.0%
Reverse Searched Latents Reviewed	1316	1198	118	9.8%	1620	-304	-18.8%	3817	4209	-392	-9.3%
Reverse Searched Idents	14	17	-3	-17.6%	47	-33	-70.2%	43	139	-96	-69.1%

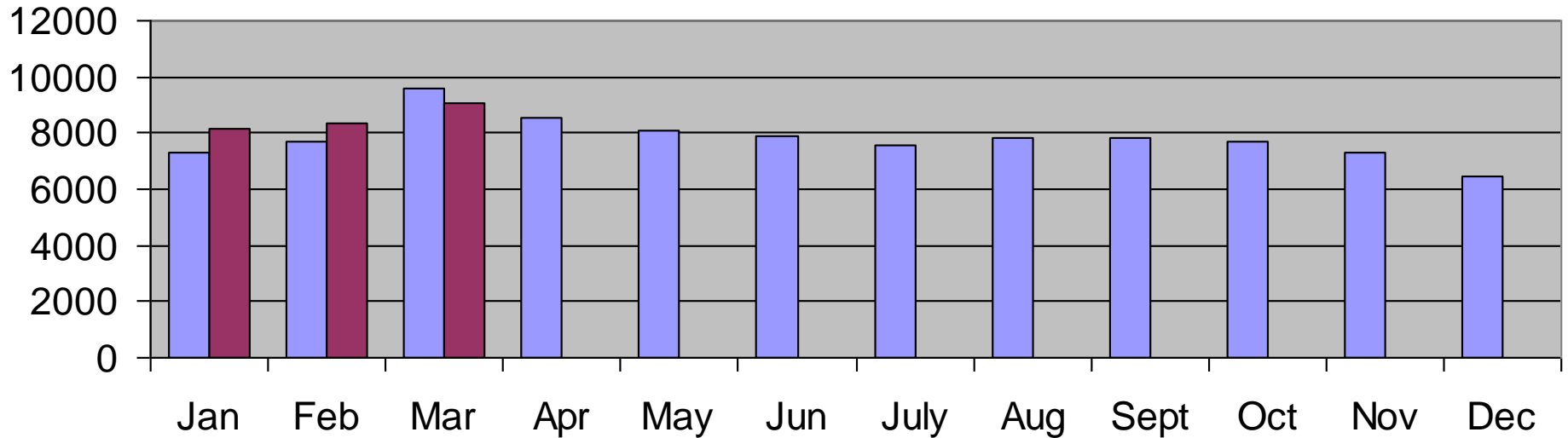
Reverse searched latents are generated from new arrests. The subjects prints are searched against the latent crime scene database.



March 2012

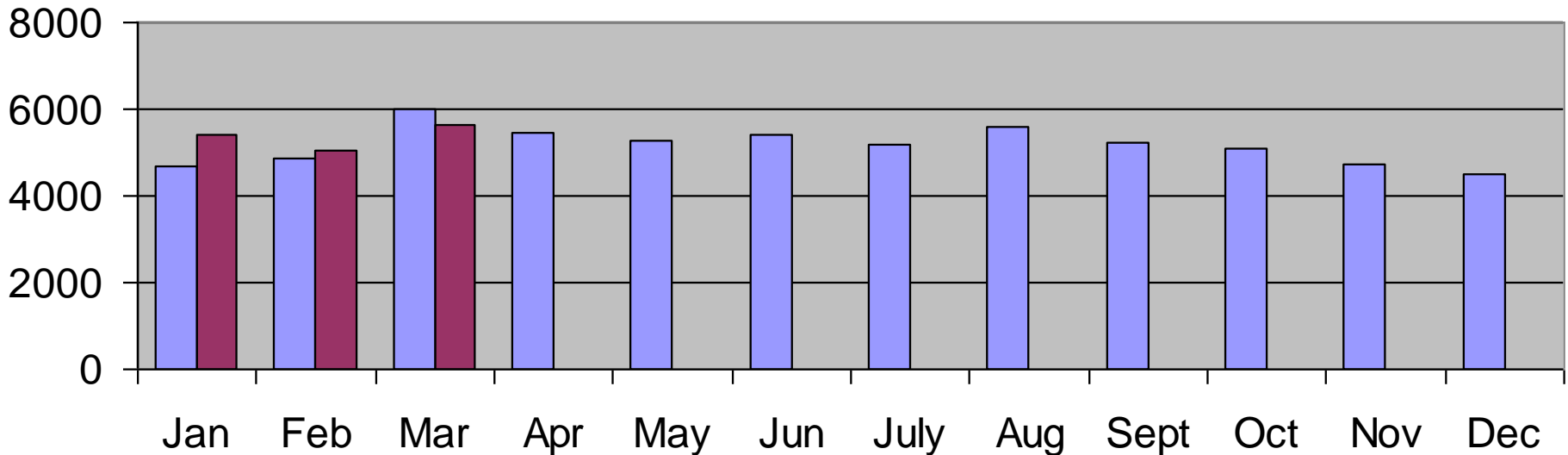
Total Arrest Processed

2011 2012



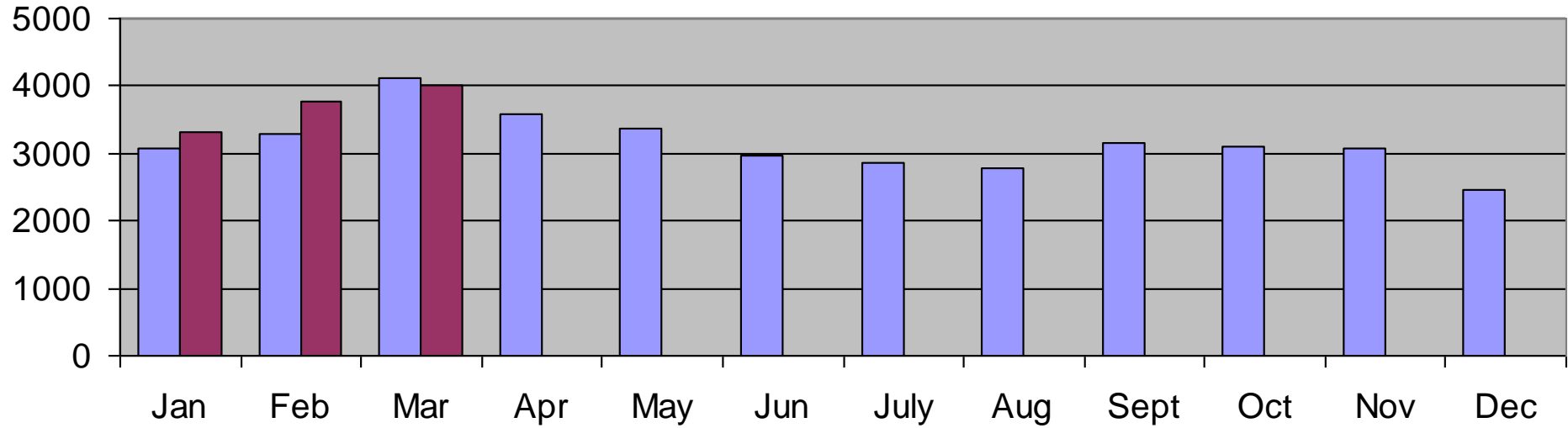
Jail Arrest Processed

2011 2012



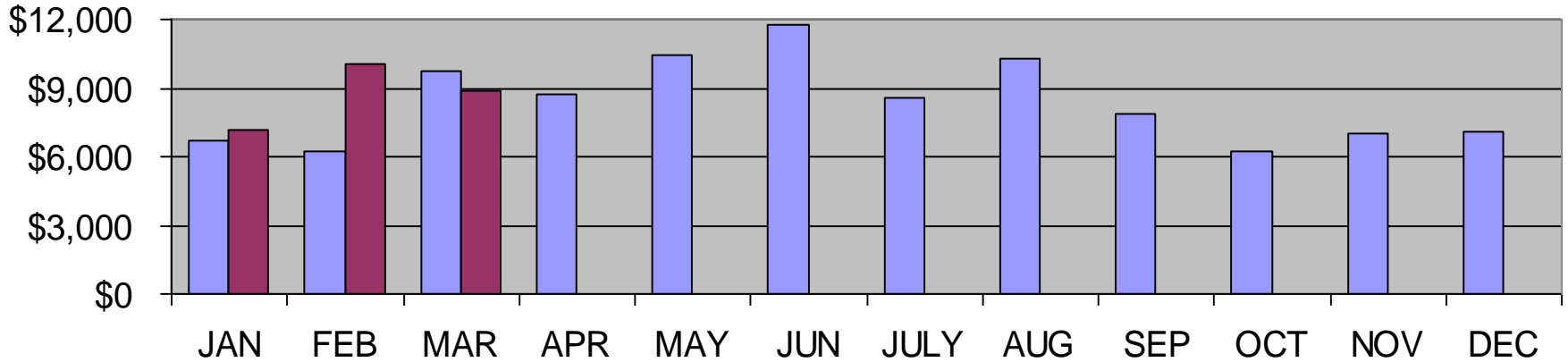
Misdemeanor Citations Processed

2011 2012



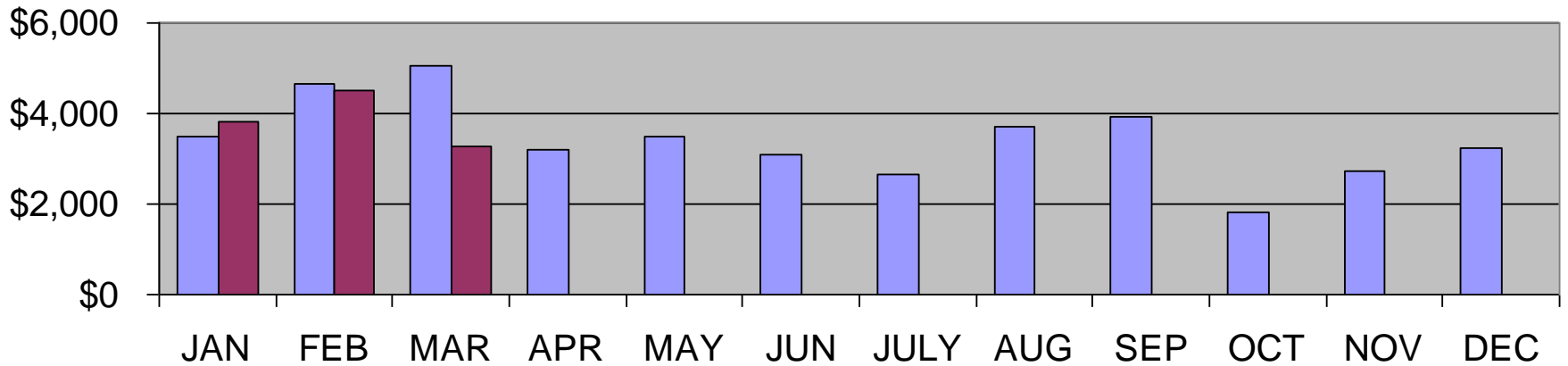
Total Fees Collected - Personal

2011 2012



Total Fees Collected - DUI

2011 2012





March 2012

Communications Center Activity March 2012

ALL TELEPHONE CALLS HANDLED BY THE COMMUNICATIONS CENTER

	March 2012		February 2012		March 2011	
ALL CALLS	30,638		27,409		37,380	
911 CALLS	5505	17.97%	4984	18.18%	5566	14.89%

911 CALL ACTIVITY AS DOCUMENTED IN CAD

	March 2012		February 2012		March 2011	
911 CALLS DOCUMENTED IN CAD	4479		4087		4472	
911 CALLS DEEMED TO BE FOUNDED	2473	55.21%	2112	51.68%	2251	50.34%
911 CALLS DEEMED TO BE UNFOUNDED	2006	44.79%	1975	48.32%	2221	49.66%
UNFOUNDED 911 CALLS FROM MOBILES	1828	91.13%	1757	88.96%	1991	89.64%
UNFOUNDED 911 CALLS FROM NSI's	941	46.91%	974	49.32%	1264	56.91%

911 CALLS RECEIVED FROM NON-INITIALIZED CELL PHONES (NSI)

	March 2012		February 2012		March 2011	
TOTAL NSI's DOCUMENTED IN CAD (% of 911 calls)	1174	26.21%	1155	28.26%	1492	33.36%
NSI's DEEMED TO BE FOUNDED	233	19.85%	181	15.67%	228	15.28%
NSI's DEEMED TO BE UNFOUNDED	941	80.15%	974	84.33%	1264	84.72%

CAD INCIDENTS (SCSO AND FSD)

	March 2012		February 2012		March 2011	
TOTAL CAD INCIDENTS	19865		18919		19327	
OFFICER INITIATED EVENTS	11743	59.11%	11783	62.28%	11393	58.95%
NON-OFFICER INITIATED EVENTS	8122	40.89%	7136	37.72%	7934	41.05%
TOTAL ALARMS (Commercial & Residential)	1139	14.02%	931	13.05%	1039	13.10%
ALL CALLS RECEIVED VIA 911	4479	55.15%	4087	57.27%	4472	56.37%

	ALARMS MEETING CRITERIA FOR METRO ALARM OFFICE			ALARMS REPORTED TO THE SCSO COMMCENTER (ALL TYPES)		
2011						
Mar	1039	772	74%	1066	8	0.75%
Apr	1347	970	72%	1373	7	0.51%
May	1169	887	76%	1203	4	0.33%
June	1312	950	72%	1330	6	0.45%
July	1261	973	77%	1280	8	0.63%
Aug	1066	796	75%	1100	5	0.45%
Sept	1042	789	76%	1077	10	0.93%
Oct	1001	746	75%	1040	14	1%
Nov	978	742	76%	1009	14	1%
Dec	971	704	73%	1001	20	2%
2011 TOTAL	13013	9714	75%	13352	109	0.82%
2012						
Jan	975	725	74%	1008	11	1%
Feb	931	681	73%	954	8	0.84%
Mar	1139	817	72%	1170	7	0.60%
TOTAL	3045	2223	73%	3132	26	0.83%

Includes ALL alarm calls reported to the SCSO CommCenter regardless of type or final disposition. All alarm types consist of: Audible, Bank, Commercial, Follow up, Holdup, Panic, and Residential. Also includes ALL dispositions. This report shows the work load for SCSO dispatchers as to any type of alarm call AND the number of alarm calls that are deemed "good" and resulted in an SCSO report of another call type.

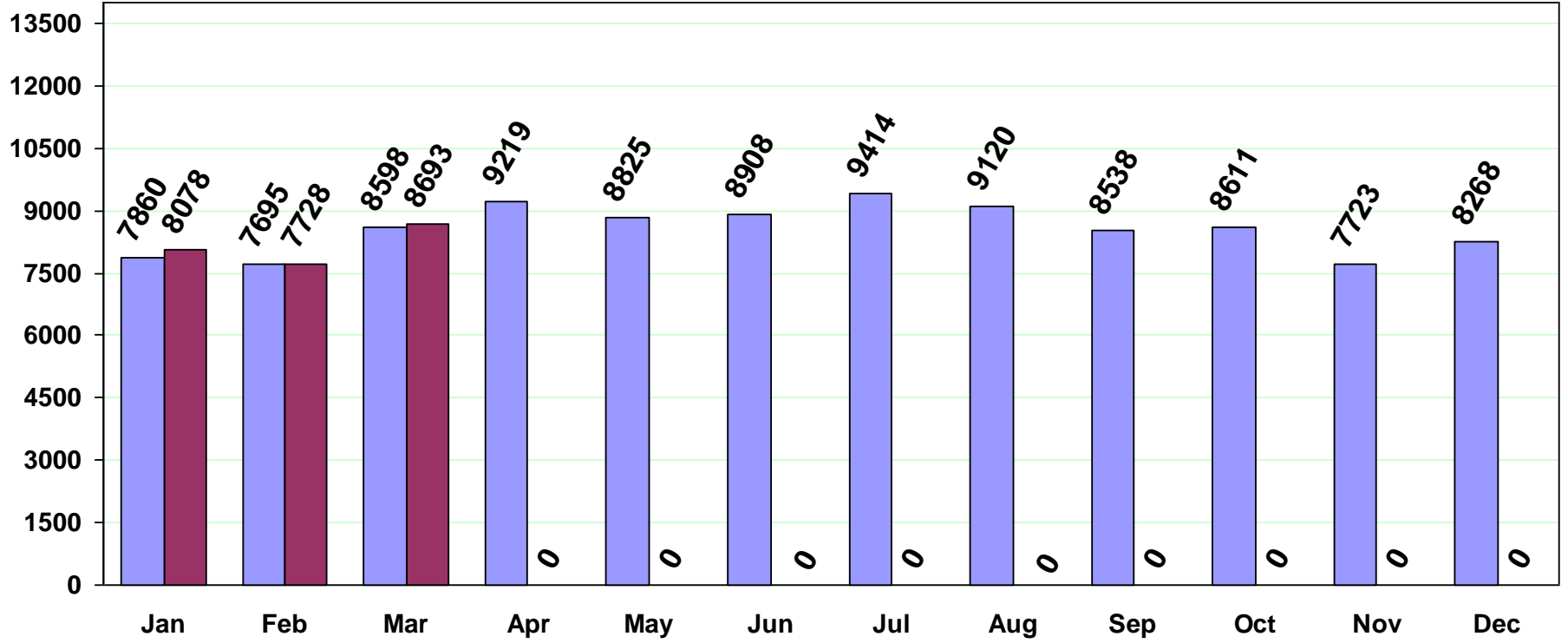
Shelby County Ordinance Article XI. Police Emergency Alarm Systems defines false alarms as those that result in response by police. "A dispatch canceled by the alarm company prior to officer reaching the scene shall not be considered a false alarm dispatch." Therefore, many alarm calls are not considered in this report.

SCSO Computer Aided Dispatch Events March 2012

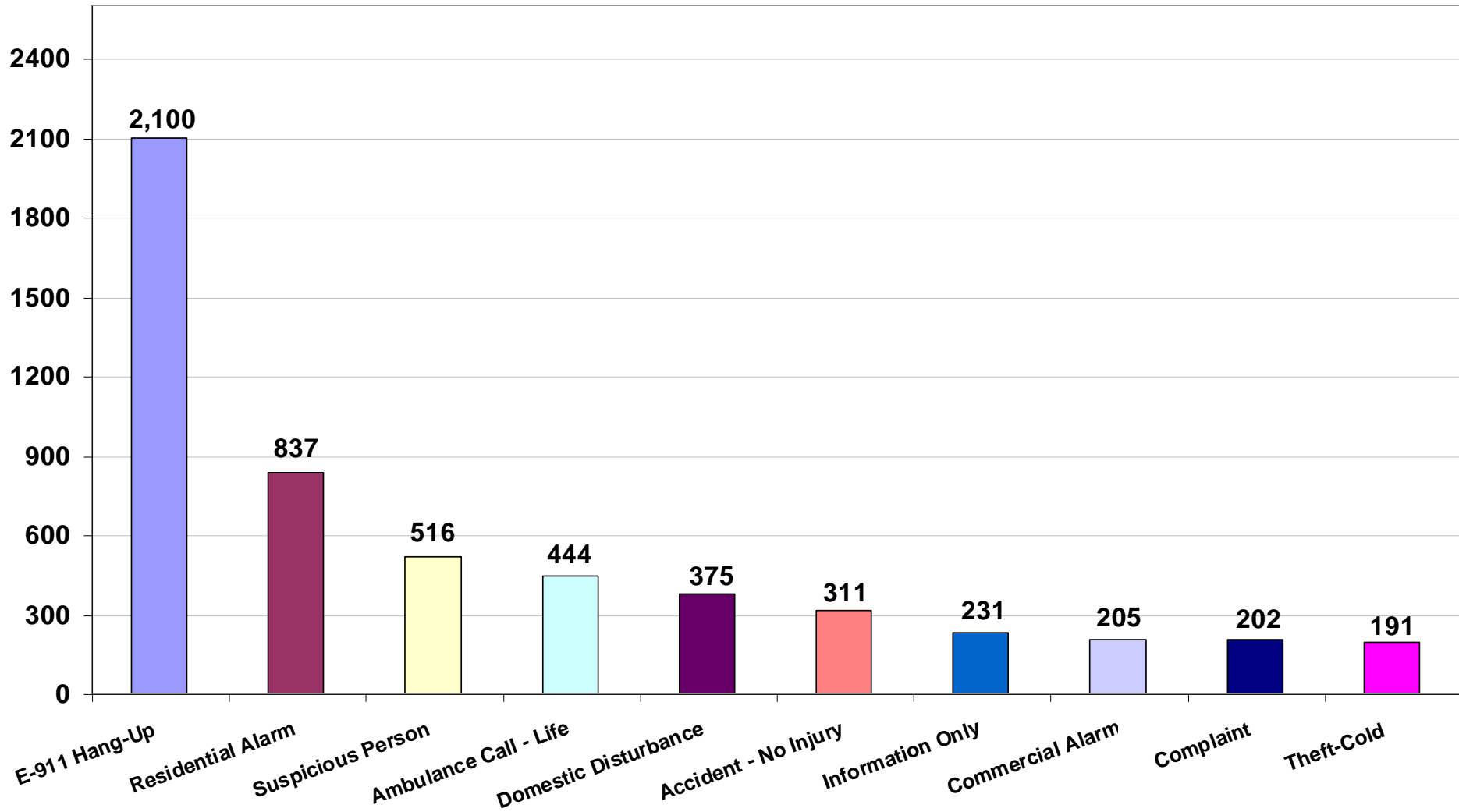
CAD Events	This Month to Last Month				Same Month Last Year			Year to Date (Last Year/This Year)			
	Mar-12	Feb-12	(+/-)	% Chng	Mar-11	(+/-)	% Chng	2012	2011	(+/-)	% Chng
Total CAD Events	19,865	18,919	946	5%	19,327	538	3%	58,246	54,934	3312	6%
Priority One Calls	1,267	1,112	155	14%	1,149	118	10%	3,601	3,321	280	8%
Priority Two Calls	7,587	7,007	580	8%	7,641	-54	-1%	22,137	21,338	799	4%
Priority Three Calls	11,011	10,800	211	2%	10,537	474	4%	32,508	30,275	2,233	7%
Adam Shift	8,906	9,116	-210	-2%	8,282	624	8%	27,430	24,613	2,817	11%
Baker Shift	7,378	6,607	771	12%	7,337	41	1%	20,854	19,978	876	4%
Charlie Shift	3,581	3,196	385	12%	3,708	-127	-3%	9,962	10,343	-381	-4%
911 Calls	4,479	4,086	393	10%	4,472	7	0%	12,854	12,698	156	1%
Officer Initiated Events	11,172	11,191	-19	0%	10,729	443	4%	33,747	30,781	2,966	10%
Officer Initiated	4,033	3,633	400	11%	4,354	-321	-7%	11,548	12,417	-869	-7%
Warrant Details	1,715	1,611	104	6%	1,587	128	8%	5,240	4,198	1,042	25%
Summons to be Served	3,405	3,742	-337	-9%	2,785	620	22%	10,766	8,469	2,297	27%
Transport Request	968	965	3	0%	1,065	-97	-9%	2,973	2,941	32	1%
Special Assignment	438	616	-178	-29%	461	-23	-5%	1,546	1,271	275	22%
Routine Check Business	464	445	19	4%	282	182	65%	1,190	945	245	26%
Welfare Check	149	179	-30	-17%	195	-46	-24%	484	540	-56	-10%
Public Calls for Service	8,693	7,728	965	12%	8,598	95	1%	24,499	24,153	346	1%
Percent of Calls Self Initiated	56.2%	59%	-3%	-5%	55.5%	1%	1%	57.9%	56%	2%	3%
Response Times*	13.3	12.3	1.0	8%	12.3	0.9	8%	12.7	12.4	0.3	2%
Priority One Calls	10.8	9.6	1.2	12%	9.7	1.0	11%	10.2	9.7	0.5	5%
Priority Two Calls	12.8	12.2	0.6	5%	11.9	0.9	8%	12.6	12.1	0.5	4%
Priority Three Calls	16.2	15.0	1.2	8%	15.3	0.9	6%	15.4	15.5	-0.2	-1%
Create to Dispatch	4.2	3.8	0.3	9%	3.7	0.4	12%	4.0	3.7	0.2	7%
Priority One Calls	4.4	4.0	0.4	9%	4.0	0.3	8%	4.3	4.2	0.1	2%
Priority Two Calls	5.2	5.2	0.0	0%	4.9	0.3	7%	5.1	5.0	0.1	2%
Priority Three Calls	3.0	2.3	0.7	28%	2.3	0.7	29%	2.6	2.0	0.6	28%
Total Time on Call	55.2	47.9	7.3	15%	51.5	3.7	7%	50.9	52.7	-1.8	-3%
Priority One Calls	84.8	66.1	18.7	28%	75.7	9.1	12%	73.0	78.3	-5.3	-7%
Priority Two Calls	43.7	42.3	1.4	3%	41.8	1.9	4%	43.9	43.2	0.7	2%
Priority Three Calls	37.2	35.3	1.9	5%	37.1	0.1	0%	35.9	36.7	-0.8	-2%

Green = down / decrease Red = up / increase

Calls for Service



Top Calls for Service March 2012





March 2012

Administration Vacancy Report

Administration Staffing

	Positions
Authorized	203
On-Board	182
Vacant	<u>21</u>

Classification	# Vacant	Org:	Hiring Plans:
Admin Tech	1	Sheriff Staff	
Legal Advisor	1	Sheriff Staff	
CSA	1	Sheriff Staff	
Paralegal	1	Sheriff Staff	
Public Info Ofc	1	Sheriff Staff	
Ops Research	1	Planning	
Mechanic III	1	Planning	
Acct B	2	Finance	
Acct B Temp	1	Finance	
Messenger	1	Finance	
Mgr. A	1	IT/IS	
Ops. Sys. Tech	1	IT/IS	
CPT SY TECH	1	IT/IS	
Dispatcher	4	Communications	
R&I Support	3	CHR&I	

Vacancies **21**

Law Enforcement Vacancy Report

Law Enforcement Staffing

<i>Class</i>	<i>Description</i>	<i>Authorized</i>	<i>Current Actual</i>	<i>Vacant</i>	<i>Comment</i>
X2470	Captain	10	9	1	
A2074	Lieutenant	36	35	1	
B6070	Patrolman	422	418	4	
Commissioned		468	462	6	
T9005	Jail Sergeant	4	3	1	
C5888	P/T D.S.	29	27	2	
Z5453	Crossing Guards	30	27	3	
Other Law Enforcement		63	57	6	
A2302	Lead Building	1	0	1	
B2003	Bldg. Sec. Officer	4	3	1	
A5108	CSA-Narcotics	2	0	2	
Civilian Positions (Vacant only)		7	3	4	
Grand Total				16	

Note: Commissioned data include positions assigned to BPSI, Training, Accreditation

Jail Vacancy Report

Jail Staffing

	Positions	
Authorized		1,116
On-Board		<u>1,036</u>
Vacant		<u><u>80</u></u>

Classification # Vacant Hiring Actions in Progress:

Correction Deputy	54
Jail SGT	14
Sup. A	1
Mgr .A	3
CSA	1
Religious	2
Maint. Mech.	1
Stockroom Worker	1
Electrician	1
Jail Proc. Asst.	2

Vacancies 80

Sick Days – March FY '12

Administration

Section Title	FY12 #	Total	MAR"12	MAR"12	FEB"12	FEB"12	JAN"12	JAN"12
	EEs	Wrkdays	sick	ASD	sick	ASD	sick	ASD
SHERIFF'S STAFF	6	130	24	48.0	6	12.0	6	12.0
PLANNING ADMIN	5	108	0	0.0	0	0.0	3	7.2
VEHICLE MAINTENANCE	9	195	3	4.0	21	28.0	42	56.0
BUDGET & FINANCE	2	43	0	0.0	0	0.0	0	0.0
PURCHASING	6	130	8	16.0	4	8.0	2	4.0
INFORMATION SYSTEMS	36	780	30	10.0	17	5.7	20	6.7
COMMUNICATIONS	47	1,018	63	16.1	67	17.1	56	14.3
R&I	62	1,344	70	13.5	69	13.4	60	11.6
CAO & STAFF	8	173	0	0.0	2	3.0	0	0.0
ADMINISTRATIVE DIVISION	181	3,922	198	13.1	186	12.3	189	12.5

* ASD = Annualized Average Sick Days per employee

Sick Days – March FY '12

Law Enforcement

Section Title	FY12 #	Total	MAR"12	MAR"12	FEB"12	FEB"12	JAN"12	JAN"12
	EEs	Wrkdays	sick	ASD	sick	ASD	sick	ASD
CHIEF DEPUTY	12	260	1	1.0	0	0.0	30	30.0
BUREAU PROF STDS& INTGTY	24	520	14	7.0	27	13.5	2	1.0
FUGITIVE	91	1,972	90	11.9	101	13.3	73	9.6
DETECTIVES	46	997	46	12.0	47	12.3	28	7.3
SWAT	14	303	3	2.6	20	17.1	1	0.9
NARCOTICS	64	1,387	12	2.3	18	3.4	1	0.2
HOMELAND SECURITY	32	693	4	1.5	45	16.9	39	14.6
PATROL	156	3,381	114	8.8	185	14.2	183	14.1
PATROL SUPPORT SERVICES	71	1,539	27	4.6	36	6.1	42	7.1
COURTS	101	2,189	158	18.8	133	15.8	134	15.9
CIVIL PROCESSING/LEVY	44	953	46	12.5	59	16.1	36	9.8
TRAINING ACADEMY	27	585	13	5.8	9	4.0	28	12.4
LAW ENFORCEMENT DIVISION	682	14,779	528	9.3	680	12.0	597	10.5

* ASD = Annualized Average Sick Days per employee

Sick Days – March FY '12

Jail and Total

Section Title	FY12 #	Total	MAR"12	MAR"12	FEB"12	FEB"12	JAN"12	JAN"12
	EEs	Wrkdays	sick	ASD	sick	ASD	sick	ASD
JAIL ADMINISTRATION	21	455	19	10.9	41	23.4	27	15.4
JAIL OPERATIONS	817	17,704	1,602	23.5	1,652	24.3	1,401	20.6
JAIL EAST	117	2,535	273	28.0	263	27.0	323	33.1
JAIL PROGRAMS	37	802	55	17.8	49	15.9	25	8.1
MAINTENANCE	18	390	3	2.0	1	0.7	16	10.7
BRYNE	1	22	7	84.0	8	96.0	0	0.0
JUVENILE IN JAIL	1	22	0	0.0	1	12.0	0	0.0
OCJP RECOVERY	1	22	1	12.0	0	0.0	0	0.0
JAIL DIVISION	1,013	21,952	1,960	23.2	2,015	23.9	1,792	21.2
SCSO TOTALS	1,876	40,653	2,686	17.2	2,881	18.4	2,578	16.5

* ASD = Annualized Average Sick Days per employee

Sick Leave by Absence Type

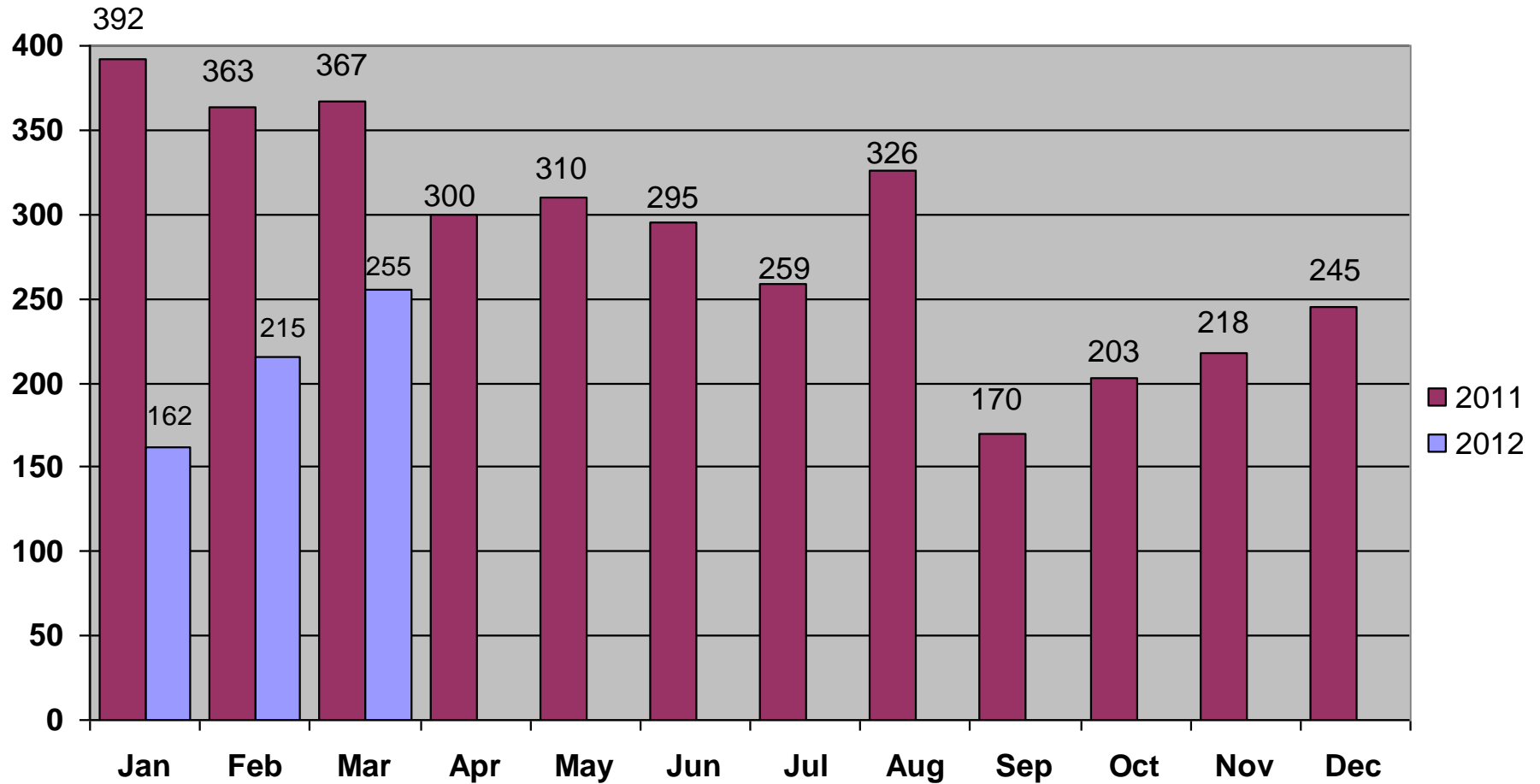
March FY '12

	MARCH SICK DAYS								FEBRUARY SICK DAYS							
	FMLA		PAID SICK		UNPAID		TOTAL		FMLA		PAID SICK		UNPAID		TOTAL	
ADMIN	108	51%	90	42%	15	7%	213	100%	58	28%	128	62%	20	10%	206	100%
LE	183	33%	345	62%	29	5%	557	100%	301	44%	379	55%	8	1%	688	100%
JAIL	1306	60%	654	30%	211	10%	2171	100%	1261	57%	754	34%	187	8%	2202	100%
Totals	1597	54%	1089	37%	255	9%	2941	100%	1620	52%	1261	41%	215	7%	3096	100%

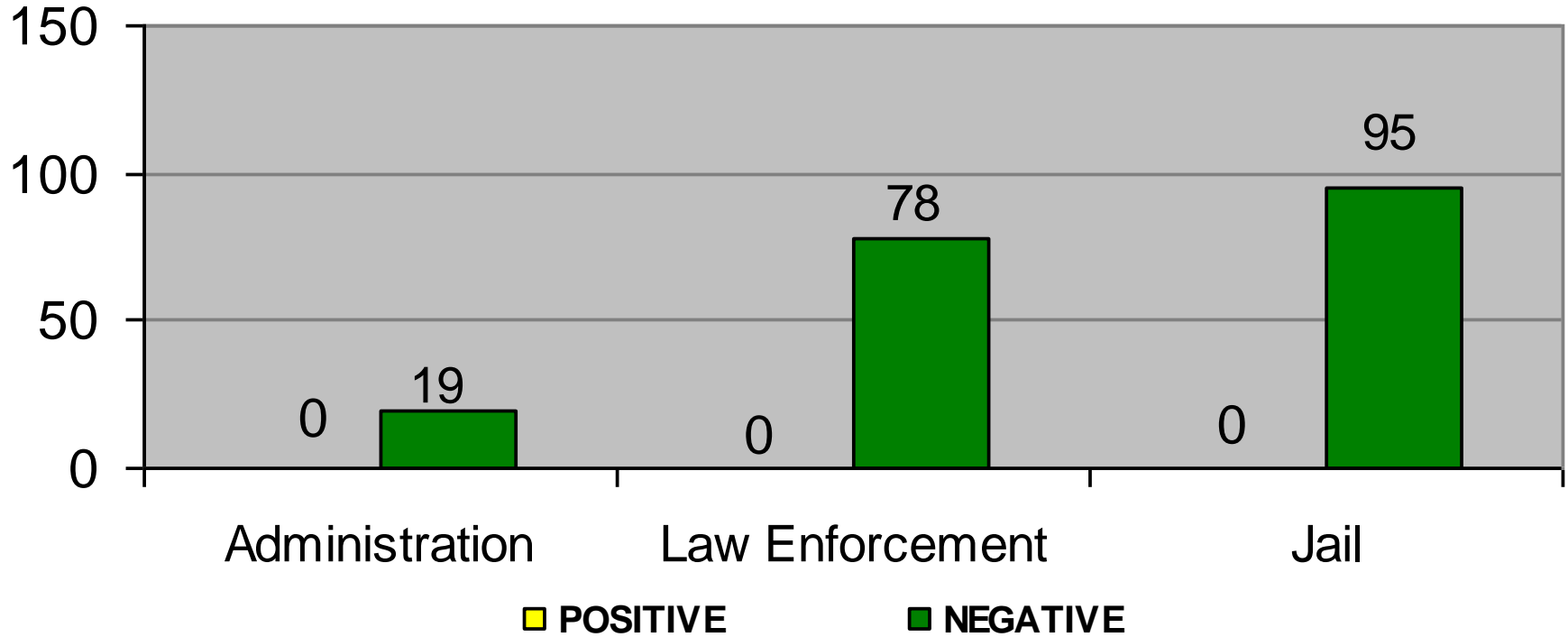
NOTE: FMLA includes paid, unpaid and TN Maternity time

Sick Days – March FY '12

Unpaid



MARCH 2012 RANDOM DRUG SCREENING RESULTS



Total Tested = 124



March 2012

Current Grant Activity

	Expiration Date	Grantor	Grant Name	SCSO Grant Award	Total Activity	Percent Expended	Current Balance	Fund / Org
1	05/30/2012	Department of Justice	Operation Safe Community (2009)	\$182,300	\$32,358	18%	\$149,942	833-610501
2	06/30/2012	Tennessee Department of Finance and Administration	Stop Formula	\$270,613	\$263,500	97%	\$7,113	514-620301
3	08/31/2012	Department of Justice	Operation Safe Community (2010)	\$205,000	\$200,628	98%	\$4,372	825-610501
4	08/31/2012	Department of Justice, Office on Violence Against Women	Violence against Women	\$124,883	\$99,106	79%	\$25,777	468-620502
5	09/30/2012	Governor's Highway Safety Office	COMET	\$10,000	\$7,831	78%	\$2,169	755-620502
6	09/30/2012	Governor's Highway Safety Office	Alcohol Countermeasures	\$200,000	\$45,265	23%	\$154,735	758-620502
7	09/30/2012	Governor's Highway Safety Office	Network Coordinator	\$15,000	\$2,489	17%	\$12,511	757-620502
8	12/31/2012	Executive Office of National Drug Control Policy	HIDTA PIP	\$45,000	\$32,690	73%	\$12,310	355-620403
9	12/31/2012	Executive Office of National Drug Control Policy	HIDTA Taskforce	\$12,737	\$2,107	17%	\$10,630	627-620403
10	06/30/2013	Tennessee Department of Finance and Administration	Re-Entry	\$108,756	\$37,992	35%	\$70,764	842-630301
11	06/30/2013	U. S. Dept. of Justice, Edward Byrne Memorial Justice Assistance Grant	JAG: JMHU, JIJ, PD	\$728,423	\$670,247	92%	\$58,176	801-630301
12	08/30/2013	Bulletproof Vest Partnership	Bulletproof Vests	\$12,967	\$0	0%	\$12,967	843-610303
13	09/30/2013	U. S. Dept. of Justice, Edward Byrne Memorial Justice Assistance Grant	JAG: JMHU, Visitor Management, In-Car Video	\$186,654	\$153,033	82%	\$33,621	199-630301
14	09/30/2013	U. S. Dept. of Justice, Edward Byrne Memorial Justice Assistance Grant	JAG: HotSpot OT and ES Boat	\$155,000	\$154,720	100%	\$280	194-610501
15	09/30/2014	U. S. Dept. of Justice, Edward Byrne Memorial Justice Assistance Grant	JAG: Document Imaging System	\$119,735	\$0	0%	\$119,735	196-610501
16	TBD	100 Club of Memphis	100 Club	\$5,298	\$0	0%	\$5,298	xxxx

Current Grant Overtime

Fiscal Year 2011 Grant Initiatives	Overtime Budgeted	Total Expended	Balance	Expiration
2009 OSC	\$182,300	\$32,358	\$149,942	05/30/2012
2010 OSC	\$150,390	\$146,124	\$4,266	08/31/2012
GHSO COMET	\$10,000	\$7,831	\$2,169	09/30/2012
GHSO Network Coordinator	\$6,000	\$2,200	\$3,800	09/30/2012
GHSO Alcohol Countermeasures	\$161,895	\$43,956	\$117,939	09/30/2012
HIDTA Parcel	\$40,000	\$32,690	\$7,310	12/31/2012
HIDTA Highway/Taskforce	\$12,737	\$2,107	\$10,630	12/31/2012
JAG	\$100,000	\$99,720	\$280	09/30/2013
Total	\$663,322	\$366,986	\$296,335	

Overtime Pipeline	Overtime Budgeted
HIDTA Parcel - 2011 Supplement	\$50,000
Total	\$50,000

Facilities & Capital Improvement Projects March 2012

FY 11 CIP#	DESCRIPTION	DATES		BUDGET		CURRENT STATUS
		START	TARGET	COST	EXPENDED	
Jail Division	Laundry Equipment Replacement and Renovation	TBD	06/15/12	\$500,000	\$0	Cost proposal over budget, project under review.
Sub-Station	Parking Lot Lighting	08/01/11	5/15/12	\$121,000	\$0	Contract approved, P/O cut. Site visits and reconstruction schedule under way.
FTU	New Operations Building and Firing Line.	TBD	TBD	\$2,750,000	\$0	A&E firm has been selected. Pending Commission approval. Planning meetings being held with consultants.

OTHER	DESCRIPTION	DATES		BUDGET		CURRENT STATUS
		START	TARGET	COST	EXPENDED	
Back-up Generator	DRMO Equipment	TBD	TBD	TBD	TBD	Project has been cancelled due to cost.
Sub-Station	Reutilization of fountain area.	04/10/12	6/30/12	\$0	\$0	Demolition in progress.
Sub-Station	Reseal parking lot.	05/15/12	6/30/12	\$0	\$0	Gathering quotes / costs.
Building Surveys	Updating Building Lists	08/01/11	5/15/12			Compiling Information.

SCSO Fleet Operations

March 2012

FY 2010-2011 Vehicle Acquisition

	<u>Initial Request</u>	<u>Ordered</u>	<u>On-Site</u>	<u>In-Service</u>	<u>Section</u>
Police Pursuit Sedan	17	10	17	4	Pat x 16, Traffic 1
Motorcycles	4	4	3	3	Traffic
4x4 Suburban	2	2	0	0	SWAT x 2
3500 Sprinter Cargo Van	1	1	0	0	SWAT x 1
1 Ton Crew 4X4	1	1	0	0	Homeland
Non-Enforcement Sedan	5	5	4	0	BPSI x 1, Cts.1, Car Pool 1, Jail 2
Full Size SUV	2	1	0	0	Trng x 1, GIB 1
Small SUV	2	2	2	2	Traffic 1, Car Pool 1
3/4 Ton 4X4 Crew Cab	2	2	0	0	ES x 1, Res x 1
Inmate Transport Van	1	1	0	0	Jail
24 Passenger Jury Bus	1	1	0	0	Courts
TOTALS:	38	30	26	9	

Vehicles Serviced

	<u>Mar-11</u>	<u>Mar-12</u>	<u>09-10 FY</u>	<u>10-11 FY</u>	<u>11-12 FYTD</u>
# Vehicles	376	311	3,291	3,695	2,822
\$\$ Amount	\$19,859	\$26,655	\$310,638	\$326,317	\$225,641
Avg. Cost Per Service	53/Veh	\$86/Veh	\$94 / Veh.	\$88 / Veh.	\$80/Veh

DVC

	<u>Mar-11</u>	<u>Mar-12</u>	<u>09-10 FY</u>	<u>10-11 FY</u>	<u>11-12 FYTD</u>
# DVC's	7	9	81	72	66
Repair Estimate	\$2,332	\$12,939	\$127,066	\$61,386	\$63,544
Avg. Cost Per DVC	\$333/Veh	\$1438/Veh	\$1568/Veh	\$853/Veh	\$963/Veh

Vehicles Washed

	<u>Dec-11</u>	<u>Jan-12</u>	<u>Feb-12</u>	<u>Mar-12</u>	<u>11-12 FYTD</u>
# Cars Trucks	76	152	179	274	1210
# Motors	1	6	1	5	17
# Kubota Sport Utility	4	0	7	1	14
# Boats	0	0	0	0	0
Vehicles Stripped	0	0	7	0	7

Department Vehicle Crash Report

March 2012

Date	DVC	Vehicle	Assignment	Driver	Contributing Factor	Weather	Collision Type	Movement	Cost Estimate	Location	Light Condition	Fault	Disposition
03/01/2012	12022	NS-254	SWAT	J. Long S# 4581	Inattention	Clear	Sideswipe - same Direction	Going Straight	\$765.43	Roadway	Daylight	Officer	Report Taken/ Officer Cited
03/01/2012	12023	N-513	Narcotics	D. Durcrest S# 455	Inproper Lane Change	Clear	Sideswipe - same Direction	Going Straight	N/R	Roadway	Dark/ Lighted	Citizen	Report Taken/ Citizen Cited
02/29/2012	12024	N-461	Narcotics	C. Grimes S#4392	Animal	Clear	Animal	Going Straight	\$1,475.04	Roadway	Daylight	Animal	Report Taken
02/16/2012	12025	S-671	GIB	K. McKinnie S# 4582	Unknown	Unknown	Unknown	Unknown	\$824.98	Unknown	Unknown	Unknown	Report Taken
03/10/2012	12026	S-467	Patrol	R. Hubbard S# 8097	Fail to Obey Traffic Control	Clear	Animal	Going Straight	\$3,145.84	Roadway	Daylight	Officer	Report Taken/ Officer Cited
03/15/2012	12027	S-669	GIB	V. Malone S#6726	Inattention	Clear	Rear end	Slowing in Traffic	\$727.51	Roadway	Daylight	Citizen	Report Taken/ Citizen Cited
03/21/2012	12028	S-623	DUI	M. Kramer S# 2182	Backing	Clear	Front End	Backing	N/R	Roadway	Dark/Lighted	Citizen	Report Taken/ Citizen Cited
03/28/2012	12030	S-636	Patrol	K. Scott S# 4288	Maneuver	Clear	Angle	Maneuver	N/C	Parking Lot	Daylight	Officer	Report Taken
03/29/2012	12031	S-514	Homeland Security	P. McEwen S# 2341	Fail To Yeild	Clear	Angle	Left Turn	\$6,000.00	Roadway	Daylight	Officer	Report Taken/ Officer Cited
								TOTAL	\$12,938.80				



March 2012

Bureau of Internal Audit

CURRENT ACTIVITY

Work Classification	Area of Focus	Assigned By	Status/Comments
Audit 11-05	Officer Safety-Courts	Audit Schedule	Forwarded for response
Open			
Audit 11-07	Inmate Release	Audit Schedule	Forwarded for signatures
Open			
Audit 11-08	Cash Receipts	Audit Schedule	Forwarded for response
Open			
Audit 11-10	Narcotics	Audit Schedule	Forwarded for signatures
Open			
Audit 12-01	Weapons/Pistol Range	Audit Schedule	Forwarded for response
Open			
Audit 12-02	Hiring Process	Audit Schedule	In progress
Work Classification	Area of Focus	Assigned By	Division
Audit 12-03	Fugitive	Audit Schedule	Law Enforcement
Audit 12-04	Communications	Audit Schedule	Administration



March 2012

Bureau of Professional Standards and Integrity

March 2012

Adm. Investigative Section	This Month to Last Month				Same Month Last Year			Year to Date (Last Year/This Year)			
	Mar-12	Feb-11	(+/-)	% Chng	Mar-11	(+/-)	% Chng	YTD 2012	YTD 2011	(+/-)	% Chng
Case Status											
Information Only Cases	7	11	-4	-36%	1	6	600%	30	7	23	329%
Beginning of Month Pending	23	21									
Opened	4	5	-1	-20%	4	0	0%	16	20	-4	-20%
Closed	7	3	4	133%	10	-3	-30%	14	18	-4	-22%
Month Ending Pending	20	23									
Case Types											
Force	1	2	-1	-50%	0	1	0%	3	0	3	0%
Conduct	1	3	-2	-67%	4	-3	-75%	9	18	-9	-50%
Performance	2	0	2	0%	0	2	0%	4	2	2	100%
Sexual Harassment	0	0	0	0%	0	0	0%	0	0	0	0%
* Disposition of Closed Cases											
Sustained	4	4	0	0%	11	-7	-64%	10	17	-7	-41%
Not Sustained	0	0	0	0%	3	-3	-100%	0	4	-4	-100%
Unfounded	0	1	-1	-100%	0	0	0%	2	0	2	0%
Exonerated	3	4	-1	-25%	4	-1	-25%	8	5	3	60%
Other	0	0	0	0%	0	0	0%	0	1	-1	-100%
Disciplinary Review Section											
Disciplinary Action Forms Processed	77	64	13	20%	60	17	28%	192	233	-41	-18%
Pre-Disciplinary Hearings	5	1	4	400%	4	1	25%	10	17	-7	-41%
Civil Service Hearings	0	0	0	0%	1	-1	-100%	0	2	-2	-100%
Commission & Compliance Section											
Fingerprints/Cards Processed	23	9	14	156%	5	18	360%	47	53	-6	-11%
Identification Cards Issued/Replaced	67	72	-5	-7%	117	-50	-43%	220	360	-140	-39%
Background Checks	64	6	58	967%	4	60	1500%	185	13	172	1323%
THP Handgun Applications	508	446	62	14%	661	-153	-23%	1544	1312	232	18%
Other											
**Off-Duty Employment - Total on File	178	172	6	3%	183	-5	-3%	178	516	-338	-66%
Active Retired Officer	256	254	2	1%							
Active Special Deputies	547	547	0	0%							
Sex Offender Section											
Sexual Offender Registrations	2	3	-1	-33%	6	-4	-67%	8	7	1	14%
Sexual Offender Quarterly/Annual Updates	49	13	36	277%	53	-4	-8%	81	73	8	11%
***Registered Sexual Offenders	94	96	-2	-2%	104	-10	-10%	94	301	-207	-69%
Adult Oriented Establishment	4	0	4	0%	0	4	0%	8	0	8	0%
****Fees Collected	\$5,700.00	\$1,050.00	4650	443%	\$4,350.00	1350	31%	\$8,400.00	\$6,450.00	1950	30%

*Totals will vary from number of complaints received due to multiple employees involved in a single complaint.

****Fees collected will vary due to the reporting month.

** Beginning Total - 172; Processed 6 new applications and cancelled 0 denied 2 for a total of 178 Off-Duty Employment applicants.

***Beginning Total - 96; Processed 2 new offenders, transferred 2; removed 2 for a total of 94 Registered Sex Offenders.

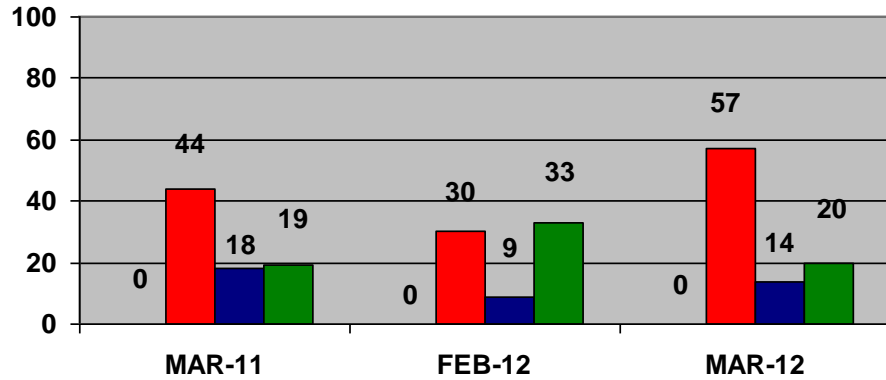
*** Also: Arrested-0, Verified-13, Warrants-0; Assisted other agencies-52, Collected DNA samples-0

Green (-) = down/decrease

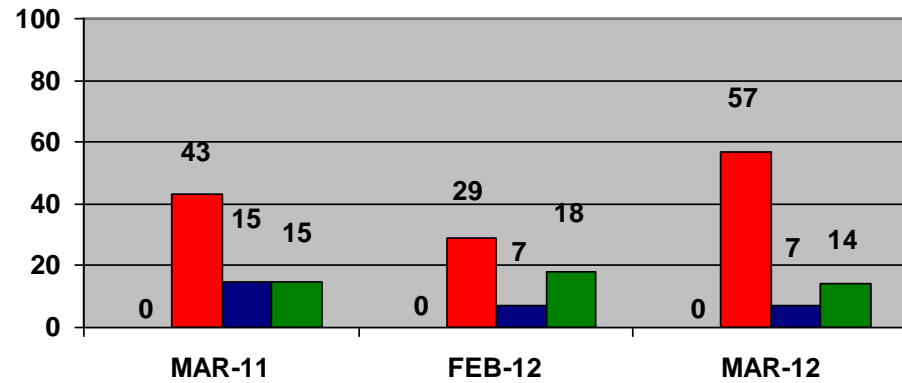
Red = up/increase

Disciplinary Infractions

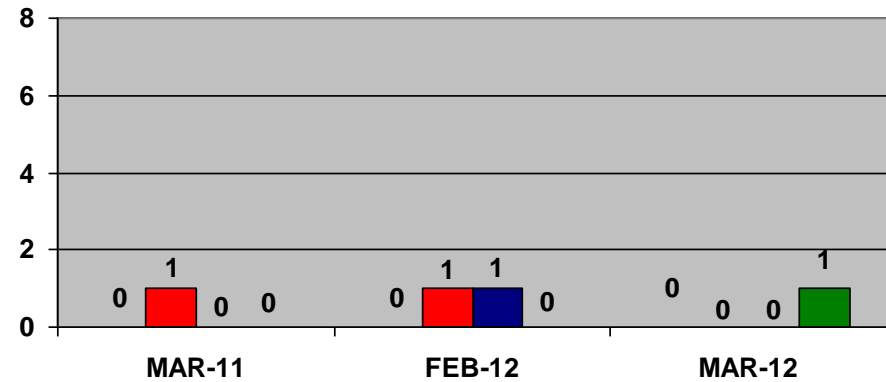
TOTAL - ALL DIVISIONS



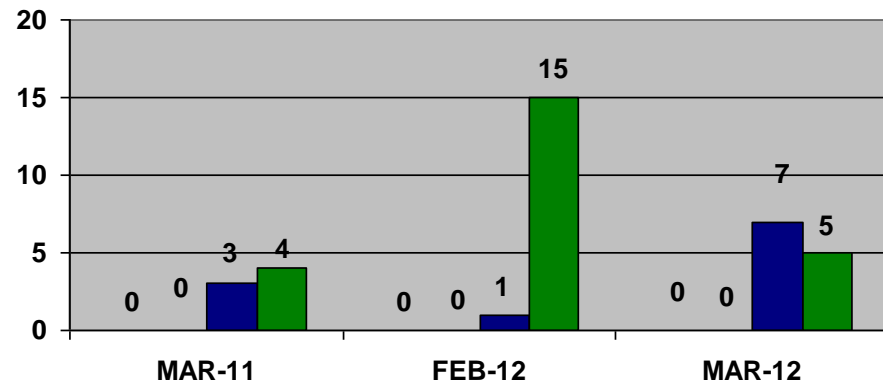
JAIL DIVISION



ADMINISTRATION DIVISION



LAW ENFORCEMENT DIVISION



Force

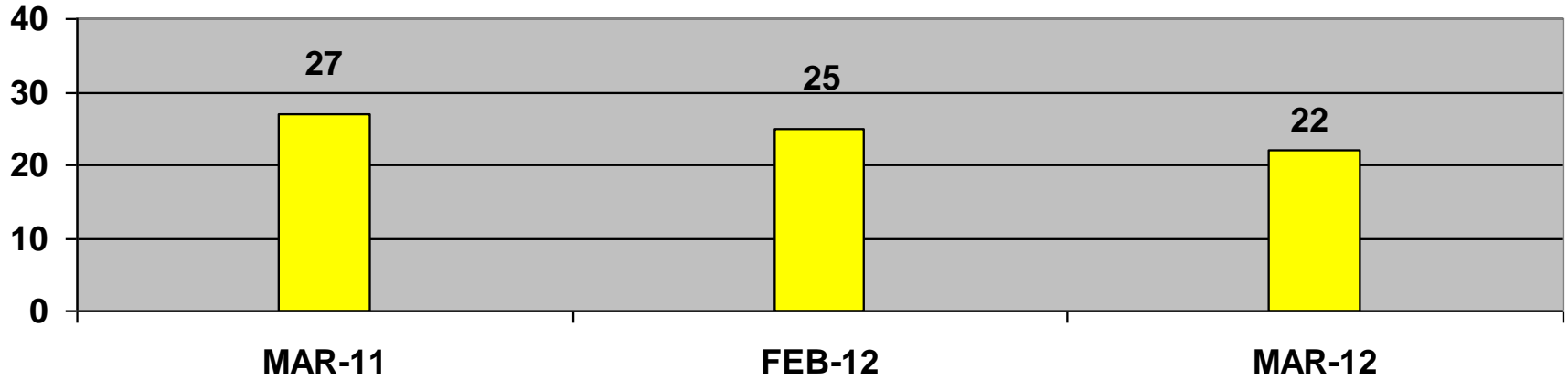
Attendance

Conduct

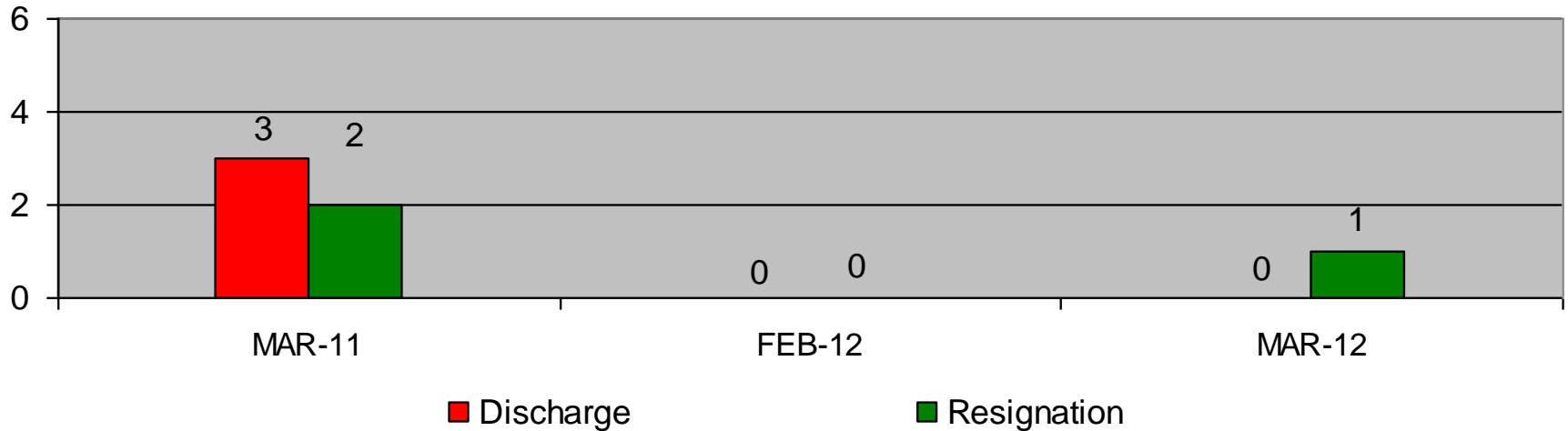
Performance

All Divisions

SUSPENSIONS



DISCIPLINARY DISCHARGE RESIGNATION/RETIREMENT PRIOR TO DISPOSITION OF CASE





March 2012

Training Academy Activity March 2012

FY 2012 (JAN-MAR) March 2012 Training Offerings	EMPLOYEE PROGRAMS							#	NON EMPLOYEE	Monthly	YTD	YTD	YTD	YTD				
	#Reg		#Rem		#	Monthly Ttl		of	Monthly Ttl			All Stdts	Nonemployee		Total			
	Students	Hours	Students	Hours	Failures	Estdt	Ehrs	Sch	NStd	Hrs w/Epl	Hrs wo	Std	Hrs	NStd	NHrs	Std	Hrs	Sch #
Jail																		
IST-JAIL	133	160						4				133	160	0	0	277	360	9
CRISIS INTERVENTION TEAM TRNG														0	0	26	40	1
Jail TTLS	133	160						4				133	160	0	0	303	400	10

Schedule					
Jail	Mar-12	Apr-12	May-12	Jun-12	DESCRIPTION
IST - JAIL	4	4	4	4	40 Hrs. block
CD RECRUITS SCHOOL #64		1	1	1	320 Hrs. block Apr 16-June 8, 2012
2012 LEADERSHIP DEVELOPMENT		2			8 Hrs. block

Training Academy Activity March 2012

FY 2012 (Jan-Mar) March 2012 Training Offerings	EMPLOYEE PROGRAMS							#	NON EMPLOYEE			Monthly		YTD		YTD		
	#Reg		#Rem		#	Monthly Ttl		of	Monthly Ttl			All Stdts		Nonemployee		All Students		
	Stdts	Hrs	Stdts	Hrs	Failures	Estdt	Hrs	Sch	NStdts	Hrs wEp	Hrs wo	Std	Hrs	NStd	NHrs	Std	Hrs	Sch #
Law Enforcement																		
Basic Patrol Crime Scene						0	0	1	7		24	7	24	7	24	7	24	1
Basic Recruit Class #121	28	176				28	176					28	176	0	0	28	504	1
Recruit-Reserve(Sept.19-2011-May 10,2012)						0	0		16		88	16	88	16	88	16	252	1
EVOC Remedial Training	6	8				6	8	1	1	8		7	8	1	8	8	16	2
GHSO - Officer Spanish Communications						0	0					0	0	0	0	26	40	1
GHSO - Spanish Instructor Training Program						0	0					0	0	0	0	2	80	1
IST-Courts	35	40				35	40	1	5	40		40	40	5	40	40	40	1
IST-Reserve								2	54		80	54	80	54	80	54	80	2
IST-SGT Law Enforcement	45	130				45	130	3	10	130		55	130	10	130	55	130	3
IST-Upper Mgmt. Law Enforcement						0	0					0	0	0	0	70	96	3
Law Enforcement TTLS	114	354	0	0	0	114	354	8	93	178	93	207	447	93	271	306	1262	16

Schedule				
Law Enforcement	Mar-12	Apr-12	May-12	
Basic Patrol Crime Scene	1			24 Hrs. block each offering
Basic Recruit Class #121	1	1	1	920 Hrs. (Jan 4 ,12 -June 14, 12)
Reserve Recruit #119	1	1	1	624 Hrs. - (Sept 19 , 2011 - May 10, 2012)
EVOC Remedial Training	1	1	1	8 Hrs. block each offering
EVOC Remedial Training for Civil Field/Levy				8 Hrs. block each offering
FTO Certification School	1	1		40 Hrs. block each offering
GHSO - Officer Spanish Communications				40 Hrs. block each offering
GHSO - Spanish Instructor Training Program				80 Hrs. block each offering
IST-Courts				40 Hrs. block each offering
IST-Law Enforcement	1	3	3	40 Hrs. block each offering
IST-Outside Agencies				
IST-SGT Law Enforcement	3	1		40 Hrs. block each offering
IST-Reserve	2			40 Hrs. block each offering
IST-Upper Mgmt. Law Enforcement				32 Hrs. block each offering

Training Academy Activity March 2012

FY 2012 (Jan- Mar) March 2012 Training Offerings	EMPLOYEE PROGRAMS								#	NON EMPLOYEE			Monthly		YTD		YTD		
	#Reg		#Rem		#	Monthly Ttl		of	Monthly Ttl			All Stdts		Nonemployee		All Students			
	Students	Hours	Students	Hours	Failures	Estdt	Ehrs	Sch	NStd	Hrs wEpl	Hrs wo	Std	Hrs	NStd	NHrs	Std	Hrs	Sch #	
Special Classroom																			
IST - Civil Process Server	9	24				9	24	1				9	24	0	0	9	24	1	
E.S. Recruits-Emergency Medical Responder						0	0		11		40	11	40	11	40	16	84	1	
TIES/NCIC/NLETS Basic Certification						0	0					0	0	0	0	2	32	1	
TIES/NCIC/NLETS Query Re-Certification	121	28				121	28	14	50	28		171	28	50	28	188	42	21	
West TN Association of Women Police	3	2.5				3	2.5	1	7	2.5		10	2.5	7	2.5	10	2.5	1	
Spcl Clsm TTLS	124	30.5	0	0	0	124	30.5	15	0	0	0	0	0	0	0	216	161	24	

Schedule	Mar-12	Apr-12	May-12	
Special Classroom				
2011 Specialized Training Courses				8 Hrs. block each offering
IST- Civilian	1	1		16 Hrs. block each offering
IST- Civilian Manager/Supervisory	1	1		8 Hrs. block each offering
IST - Civil Process Server				24 Hrs. block each offering
Citizens' Academy Class #17		1		(11 weeks) Tuesday & Saturday
Courts Rapid Response Team Training				4 Hrs. block each offering
Dispatcher In-Service				16 Hrs. block each offering
E.S. Recruit Class		1		April 2 - 25, 2012 - (69 hrs)
E.S. Recruits-Emergency Medical Responder	1			Jan 2, 2012 - March 30, 2012 - (120 hrs)
Incident Response to Terrorist Bombing				4 Hrs. block each offering
Riot Control / Incident Command System				4 Hrs. block each offering
Standardized Field Sobriety Testing Cert.				24 Hrs. block each offering
TIES/NCIC/NLETS Basic Certification				32 Hrs. block each offering
TIES/NCIC/NLETS Query Re-Certification				2 Hrs. block each offering
West TN Association of Women Police	1			2.5 Hrs block each offering

FY 2012 (Jan-Feb) March 2012 Training Offerings	EMPLOYEE PROGRAMS								#	NON EMPLOYEE			Monthly		YTD		YTD		
	#Reg		#Rem		#	Monthly Ttl		of	Monthly Ttl			All Stdts		Nonemployee		Total	Total	Total	
	Students	Hours	Students	Hours	Fail	Estdt	Ehrs	Sch	NStd	Hrs wEpl	Hrs wo	Std	Hrs	NStd	NHrs	Students	Hours	Sch #	
Jail TTLS	133	160	0	0	0	0	0	4	0	0	0	133	160	0	0	303	400	10	
Law Enforcement TTLS	114	354	0	0	0	114	354	8	93	178	93	207	447	93	271	306	1262	16	
Spcl Clsm TTLS	124	30.5	0	0	0	124	30.5	15	0	0	0	0	0	0	0	216	160.5	24	
2012 SCSO TOTALS	371	545	0	0	0	238	384.5	27	93	178	93	340	607	93	271	825	1823	50	

Firearms Training Brief March 2012

F.T.U.	Monthly Statistics		Year To Date 2012	
Monthly Brief	Mar-12		Totals (2012)	
Mar-12	Students	Hours	Students	Hours
Training / Special Firearms			YTD	YTD
Basic Regular Recruit Law Enf	28	56	28	200
Basic Reserve Recruit Law Enf			16	52
Civil Process Server Training / Qual	9	8	9	8
F.T.U. Demonstrations				
Firearms In-Service	87	64	87	64
Firearms Practice Sessions				
HR 218/LEOSA Retired Annual Qual	5	16	7	24
Jail Division / Training				
Jail Division / Qualification				
Off Duty Weapon Qual	2	2	8	8
Outside Agency Firearms Training	118	47	153	58
Patrol Rifle Training / Qual			15	16
POST Annual Qualification	77		77	
Remedial Training	2	8	2	8
Reserve Annual Qual	45		45	
Reserve Firearms In-Service	47	16	47	16
Sheriff's Office Course	9	9	16	16
Specialized Firearms (SWAT / Narc/ F/A trng for a specific Unit/Div)	16	16	16	44
Specialized Schools (Hosted)				
Training / Juv Ct / Other				
Totals for Training	445	242	526	514

Firearms Training Brief March 2012

F.T.U.	Monthly Statistics	Year To Date
Mar-12	Hours	Hours
Equipment		YTD
Maintenance / Grounds	307	1227.0
Inventory (Ammo / Weapons / Gas)	26	46
Equipment Totals	333	1273
Schools / Training		YTD
Instructor Development		32
Schools / Training Totals	16	32
Annual Leave		YTD
Vacation, Bonus, Accum. Time	236.5	447.5
Sick / FMLA	0	0
Annual Leave Totals	236.5	447.5
Clerical		YTD
	132.5	436.5
Clerical Totals	132.5	436.5
Administrative		YTD
	351.0	1047.0
Administrative Totals	351.0	1047.0



Budget & Finance

O&M Expenditures Administration

SECTION NAME	FY-12 BUDGET	YTD		AVAILABLE BALANCE	% of BUDGET expensed YTD	% of Budget <i>Exp & Enc</i> YTD
		EXPENDITURES 03/31/2012	OPEN ENCUMB.			
Sheriff's Staff	1,272	872	-	400	69%	69%
Planning Admin	257,400	154,572	27,603	75,225	60%	71%
Vehicle Maintenance	2,281,921	1,283,887	486,757	511,277	56%	78%
Budget & Finance	250	210	-	40	84%	84%
Purchasing	1,430,935	920,204	231,719	279,012	64%	81%
Information Systems	1,416,978	1,071,795	225,640	296,326	76%	92%
Communications	1,299,160	772,147	32,476	494,537	59%	62%
Criminal History R&I	500	381	-	119	76%	76%
Chief Administrative Officer	527,001	234,185	223,731	69,085	44%	87%
Division Total	7,215,417	4,438,253	1,227,926	1,726,021	62%	79%

Goal 75%

O&M Expenditures

Law Enforcement

SECTION NAME	FY-12 BUDGET	YTD		AVAILABLE BALANCE	% of BUDGET expended YTD	% of Budget Exp & Enc YTD
		EXPENDITURES 03/31/2012	OPEN ENCUMB.			
Chief Deputy	113,435	83,803	654	28,978	74%	74%
Bureau of Professional Standards	24,376	12,845	-	11,531	53%	53%
Fugitive	258,574	105,187	80,395	72,992	41%	72%
Detectives	57,437	32,451	800	24,186	56%	58%
SWAT	56,550	22,683	22,789	11,078	40%	80%
Narcotics	-	-	-	-	N/A	N/A
Homeland Security	1,398,484	856,684	493,201	48,599	61%	97%
Patrol	117,974	83,752	23,871	10,351	71%	91%
Patrol Support Services	109,545	45,165	35,283	29,097	41%	73%
Courts	343,900	278,890	11,067	53,943	81%	84%
Civil/Levy	5,627	5,147	-	480	91%	91%
Training	609,706	322,750	99,797	187,159	53%	69%
Division Total	3,095,608	1,849,357	767,857	478,394	60%	85%

Goal 75%

O&M Expenditures Jail & Total

SECTION NAME	FY-12 BUDGET	YTD		AVAILABLE BALANCE	%	% of Budget
		EXPENDITURES 03/31/2012	OPEN ENCUMB.		of BUDGET expensed YTD	Exp & Enc YTD
Jail Administration	8,681,000	5,513,136	2,540,902	626,962	64%	93%
Jail Operations	452,230	296,173	137,207	18,850	65%	96%
Jail East	39,770	38,141	-	1,629	96%	96%
Jail Programs	-	-	-	-	0%	0%
Jail Maintenance	908,000	507,152	219,402	181,446	56%	73%
Division Total	10,081,000	6,354,602	2,897,511	828,887	63%	92%
TOTAL O & M BUDGET	20,392,025	12,642,212	4,893,294	3,033,302	62%	86%
					Goal 75%	

Overtime Budget - Administration

Section Name	Annual Budget	Monthly Budget	Mar 2012	FY-T-D BUDGET	FY-T-D EXPEND	SURPLUS/ (DEFICIT)	% Expend
Sheriff's Staff	12,000	1,000	0	9,000	2,050	6,950	17%
Planning Admin	515	43	0	386	506	(120)	98%
Vehicle Maintenance	5,750	479	0	4,313	3,568	745	62%
Budget & Finance	0	0	0	0	0	0	0%
Purchasing	530	44	0	398	0	398	0%
Information Systems	30,000	2,500	2,587	22,500	48,611	(26,111)	162%
Communications	78,000	6,500	1,464	58,500	30,006	28,494	38%
Records & Identification	46,950	3,913	1,226	35,213	43,344	(8,132)	92%
CAO	530	44	0	398	0	398	0%
Administrative Division	174,275	14,523	5,277	130,706	128,085	2,621	73%

Goal <= 75%

Overtime Budget – Law Enforcement

Section Name	Annual Budget	Monthly Budget	Mar 2012	FY-T-D BUDGET	FY-T-D EXPEND	SURPLUS/ (DEFICIT)	% Expend
Chief Deputy	0	0	0	0	3,238	(3,238)	100%
Professional Stds & Integrity	76,600	6,383	3,333	57,450	51,380	6,070	67%
Fugitives	154,500	12,875	37,553	115,875	134,011	(18,136)	87%
Detectives	280,000	23,333	14,116	210,000	126,786	83,214	45%
SWAT	106,900	8,908	12,799	80,175	64,215	15,960	60%
Narcotics/Street Crimes	620,000	51,667	66,330	465,000	493,177	(28,177)	80%
Homeland Security	178,000	14,833	10,616	133,500	149,992	(16,492)	84%
Patrol	463,500	38,625	58,773	347,625	367,196	(19,571)	79%
Patrol Support Services	240,000	20,000	30,677	180,000	110,390	69,610	46%
Courts	1,238,611	103,218	111,278	928,958	1,032,872	(103,914)	83%
Civil Processing/Levy	51,500	4,292	4,709	38,625	15,078	23,547	29%
Training Academy	71,800	5,983	2,208	53,850	76,563	(22,713)	107%
Law Enforcement Div.	3,481,411	290,118	352,392	2,611,058	2,624,898	(13,840)	75%

Goal <= 75%

Overtime Budget – Jail & Totals

Section Name	Annual Budget	Monthly Budget	Mar 2012	FY-T-D BUDGET	FY-T-D EXPEND	SURPLUS/ (DEFICIT)	% Expend
Jail Administration	13,400	1,117	0	10,050	8,512	1,538	64%
Jail Operations	1,451,000	120,917	202,355	1,088,250	1,205,891	(117,641)	83%
Jail East	185,400	15,450	30,709	139,050	124,874	14,176	67%
Jail Programs	1,500	125	31	1,125	1,329	(204)	89%
Jail Maintenance	30,000	2,500	6,557	22,500	36,592	(14,092)	122%
Jail Division	1,681,300	140,108	239,652	1,260,975	1,377,198	(116,223)	82%
SCSO Totals	5,336,986	444,749	597,321	4,002,740	4,130,181	(127,442)	77%

Goal <= 75%

Personnel Cost vs Budget FY '12

Month of: March 2012

	<i>Budget</i>	<i>Expenditures</i>	<i>Surplus / (Deficit)</i>
Salaries	\$7,099,487	\$6,871,935	\$227,552
Other Compensation	\$828,930	\$810,977	\$17,953
Fringe Benefits	\$2,878,258	\$2,680,862	\$197,396
Total	\$10,806,676	\$10,363,774	\$442,902

Fiscal Year to Date (July 2011 - March 2012)

	<i>Budget</i>	<i>Expenditures</i>	<i>Surplus / (Deficit)</i>
Salaries	\$63,895,387	\$62,696,125	\$1,199,262
Other Compensation	\$9,760,371	\$10,006,515	(\$246,144)
Fringe Benefits	\$25,904,324	\$24,840,881	\$1,063,443
Total	\$99,560,081	\$97,543,521	\$2,016,560



The End
The End